



OUTDOOR WALL-MOUNT ■ Manual, Non-Refrigerated Bottle Filler

Oasis's Outdoor Wall-Mount bottle filler, is a sustainable hydration solution for park visitors and city goers alike.

Wall-mount in design for easy connection to mains-access within buildings.

This outdoor bottle filler requires no electricity, for easy installation and maximum flexibility in placement. Simply activate the unit via the push-button.

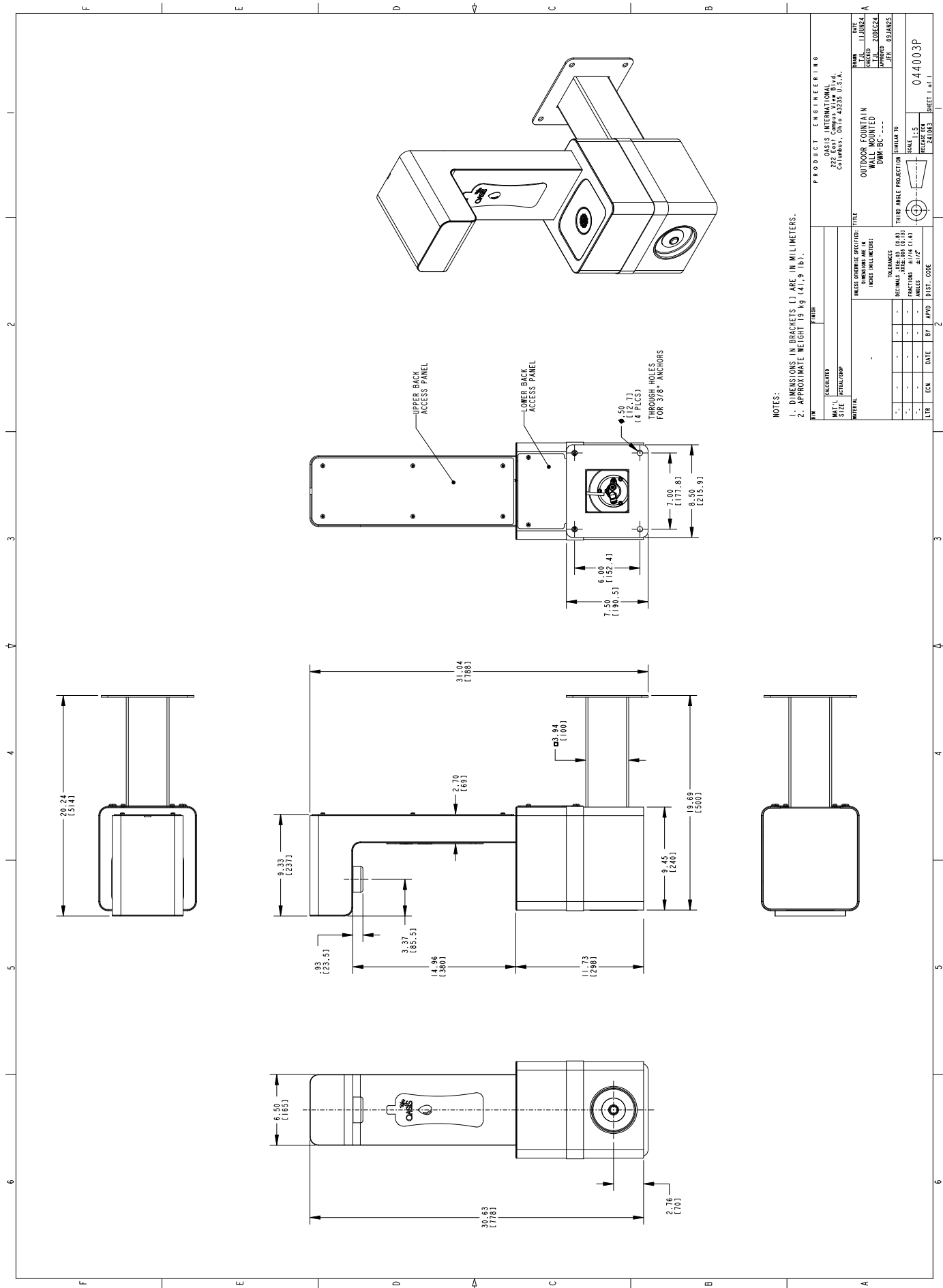
Its vandal-resistant design and corrosion-resistant cabinetry ensure durability in any environment. Designed with an open-sided alcove for easy access, it provides refreshing water wherever it's needed. By offering a sustainable alternative to single-use plastic bottles, the Oasis Outdoor Wall-Mount Bottle Filler promotes eco-friendly habits and reduces plastic waste and litter.

Available in the following standard colours:

- White - 044003P101
- Forest Green - 044003P001
- Navy - 044003P201



MODEL	Outdoor Wall-Mount Bottle Filler
ACTIVATION	Manual (Push-button)
FILTRATION	Green Filter (optional), Built-in 100 micron strainer
DRAINAGE TYPE	1-1/4" NPSL connection. Drain not included
EXTERIOR DIMENSIONS	Powder coated, 2.5mm marine grade 316 stainless steel 788mm (H) x 216mm (W) x 514mm (D)[mm]
ALCOVE HEIGHT	380 mm
NET WEIGHT	19 kg
POWER SUPPLY	No Electricity Required
COUNTRY OF ORIGIN	Poland
CERTIFICATIONS	Reg 4 compliant
WARRANTY	1 Year



NOTES:
 1. DIMENSIONS IN BRACKETS () ARE IN MILLIMETERS.
 2. APPROXIMATE WEIGHT 19 kg (41.9 lb.).

PRODUCT ENGINEERING		OASIS INTERNATIONAL		DATE	
229 East Campus View Blvd.		229 East Campus View Blvd.		2016.02.24	
Columbus, OH 43235 U.S.A.		Columbus, OH 43235 U.S.A.		2016.02.24	
DRAWN BY: J.F.		CHECKED BY: J.F.		DATE: 04/00/3P	
TITLE: OUTDOOR FOUNTAIN		DRAWING NO.: DW-BC-001		SCALE: 1:5	
MATERIAL: UNLESS OTHERWISE SPECIFIED: INCH DIMENSIONS		FINISH: POLISHED		THIRD ANGLE PROJECTION	
TOLERANCES:		DECIMALS: ±0.005 (0.001)		FRACCTIONS: ±1/16 (1.6)	
ANGLES: ±0.125		HOLE DIA: ±0.005		RELEASE CODE: 24.003	
LTR	ECN	DATE	BY	APP'D	DIST. CODE

