



QUASAR HYDRATION STATION

MWEBQY RW ■ Contactless, Non-Refrigerated

MW2EBQY RW ■ Contactless, Refrigerated

MW8EBQY RW ■ Contactless, Refrigerated

Bottle Filler

The Bottle Filling Station is perfect for those high traffic areas. With a contactless, touch-free activation - there are no fears of cross-contamination.

Designed for urban settings, the sloped top prevents trash being placed on the unit. Additionally, the powder-coat steel finish is highly-durable. This unit can be installed right against the wall to save-space. Easily serviced with removable lower panel for quick access to filters, electronics and chiller.

Quasar bottle fillers shall have UVC-LED treatment at the point of dispense, which disinfects the water while it is being dispensed; Killing 99.99% of bacteria. UVC-LED also cycles on periodically to keep the dispense-point sanitized between dispenses.

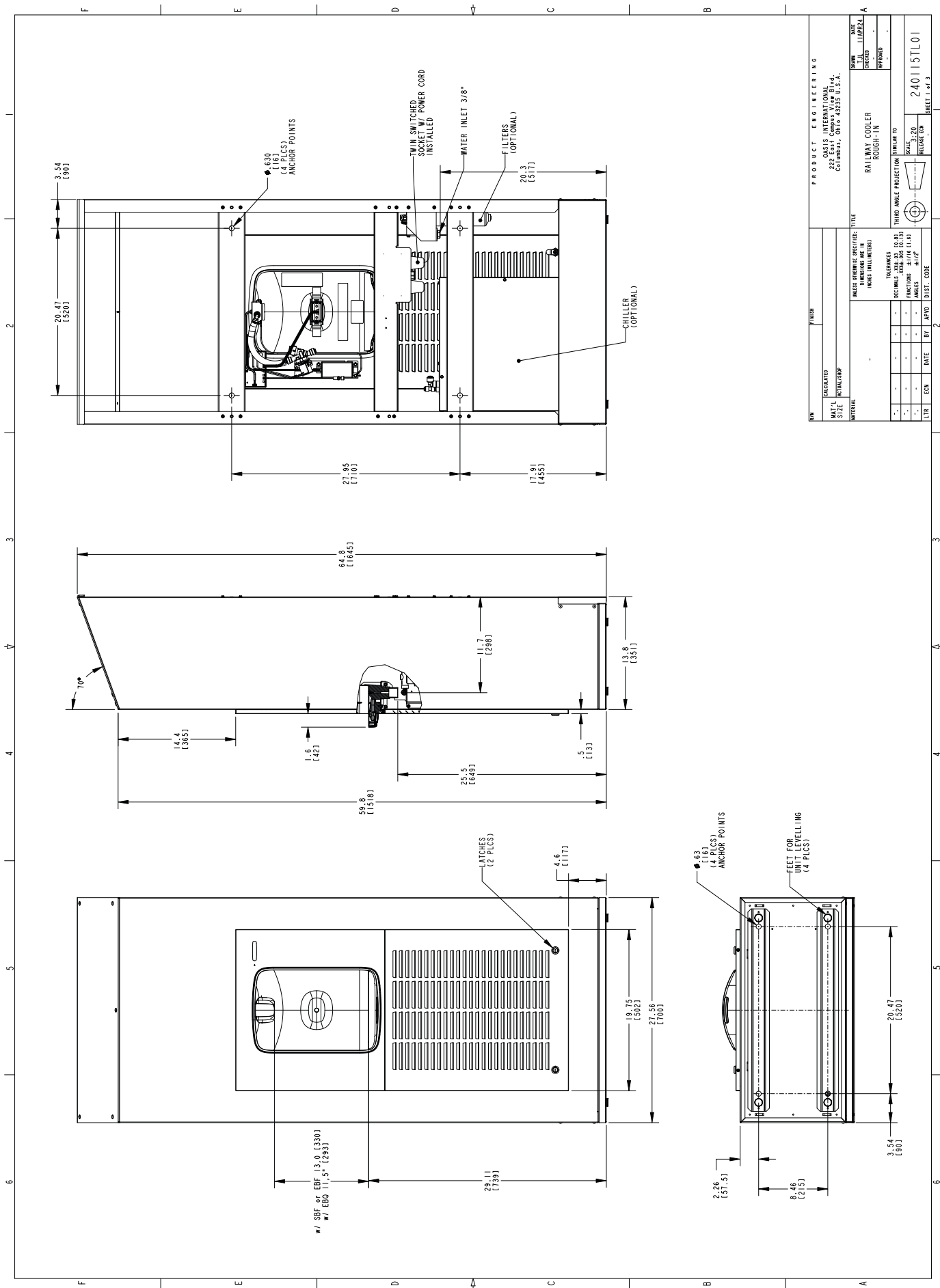
The Bottle Filling Station comes as standard in white. There is ample space for potential branded wrapping to add commercial value to this unit if you so wish.

Chilled and Non-chilled models are available both with or without Quasar.

The cooling system uses R-134a or R-290. The R290 refrigerant is mandatory for countries subject to the F-Gas Directive. R134a refrigerant available for other markets.



MODEL CODE	MWEBQY RW	MW2EBQY RW	MW8EBQY RW
ACTIVATION		Contactless (Infrared sensor)	
SENSOR COVERAGE		Up to 5cm (approx.)	
FILTRATION		Optional Green Filter / VersaFilter III	
DISINFECTION		Quasar UVC LED	
Auto-Off Water Flow		Yes	
FLOW RATE		4.2LPM	
DRAINAGE TYPE		Built in drain, Removable drip tray	
COLOUR		Standard White; Optional custom colours or wrapping.	
EXTERIOR		Brushed Stainless Steel	
CHASSIS		Heavy Duty Galvanised Steel	
DIMENSIONS		1505mm (H) x 700mm (W) x 350mm (D)[mm]	
ALCOVE HEIGHT		300 mm	
NET WEIGHT	49 kg	64 kg	73 kg
POWER SUPPLY		220-240V, 50/60 Hz	
COOLING PERFORMANCE	N/A	10 LPH Rated Capacity & Base Rate (10°C in 21°C amb. temp.)	60 LPH Rated Capacity & Base Rate (10°C in 21°C amb. temp.)
FULL LOAD AMPS	0.1 A	0.8 A	2.2 A
RATED WATTS	7 W	102 W	347 W
ENERGY SYSTEM		Refrigeration is on only when in use or if water temp increases during long period of standby.	
COUNTRY OF ORIGIN		Poland	
CERTIFICATIONS		CE (LVD, EMC, RoHS)	
WARRANTY		1 Year	



PRODUCT ENGINEERING

OASIS INTERNATIONAL
2250 Midway Rd.
Columbus, Ohio 43235 U.S.A.

DESIGNED BY	ILLIPEZZA
CHECKED BY	
APPROVED BY	

RAILWAY COOLER
ROUGH-IN

PROJECT NO.	24015TL01
SHEET NO.	3/20
TOTAL SHEETS	3

REV	DESCRIPTION	DATE
1	INITIAL RELEASE	11/01
2	REVISION	11/01

DESIGNER	DATE
ILLIPEZZA	11/01

TITLES

PROJECT	RAILWAY COOLER
DESCRIPTION	ROUGH-IN
DATE	11/01

TOLERANCES UNLESS SPECIFIED OTHERWISE:
DIMENSIONS IN MILLIMETERS

ANGLES	±0.5°
LENGTHS	±0.10 mm
RADIUS	±0.10 mm
DIAMETERS	±0.10 mm
WIDTHS	±0.10 mm
THICKNESSES	±0.10 mm

SCALE: 1:1

PROJ. CODE: 24015TL01

SHEET 3 OF 3



www.oasis.ie
www.oasiscoolers.com
info@oasis.ie

OASIS IRELAND
Bunree Industrial Estate, Ballina,
Co. Mayo, F26 D5R3, Ireland.
+353 96 71222

OASIS POLAND
ul.Gutenberga 20,
44-164, Gliwice, Poland
+48 32 332 65 01