



PLF8MY Manual, Refrigerated
PLF8MHY Manual, Refrigerated, Hot 'n' Cold
PLF14MY Manual, Refrigerated
PLF14MHY Manual, Refrigerated, Hot 'n' Cold
PM Manual, Non-Refrigerated
Drinking Fountain

PLF8MY

Delivering 60LPH of 10°C water at 21°C ambient.
 The cooling system uses R-134a or R-290a refrigerant.

PLF8MHY

Additionally delivers Hot water.

PLF14MY

Delivering 106LPH of 10°C water at 21°C ambient.
 The cooling system uses R-134a or R-290a refrigerant.

PLF14MHY

Additionally delivers Hot water.

PM

Delivering ambient drinking water.

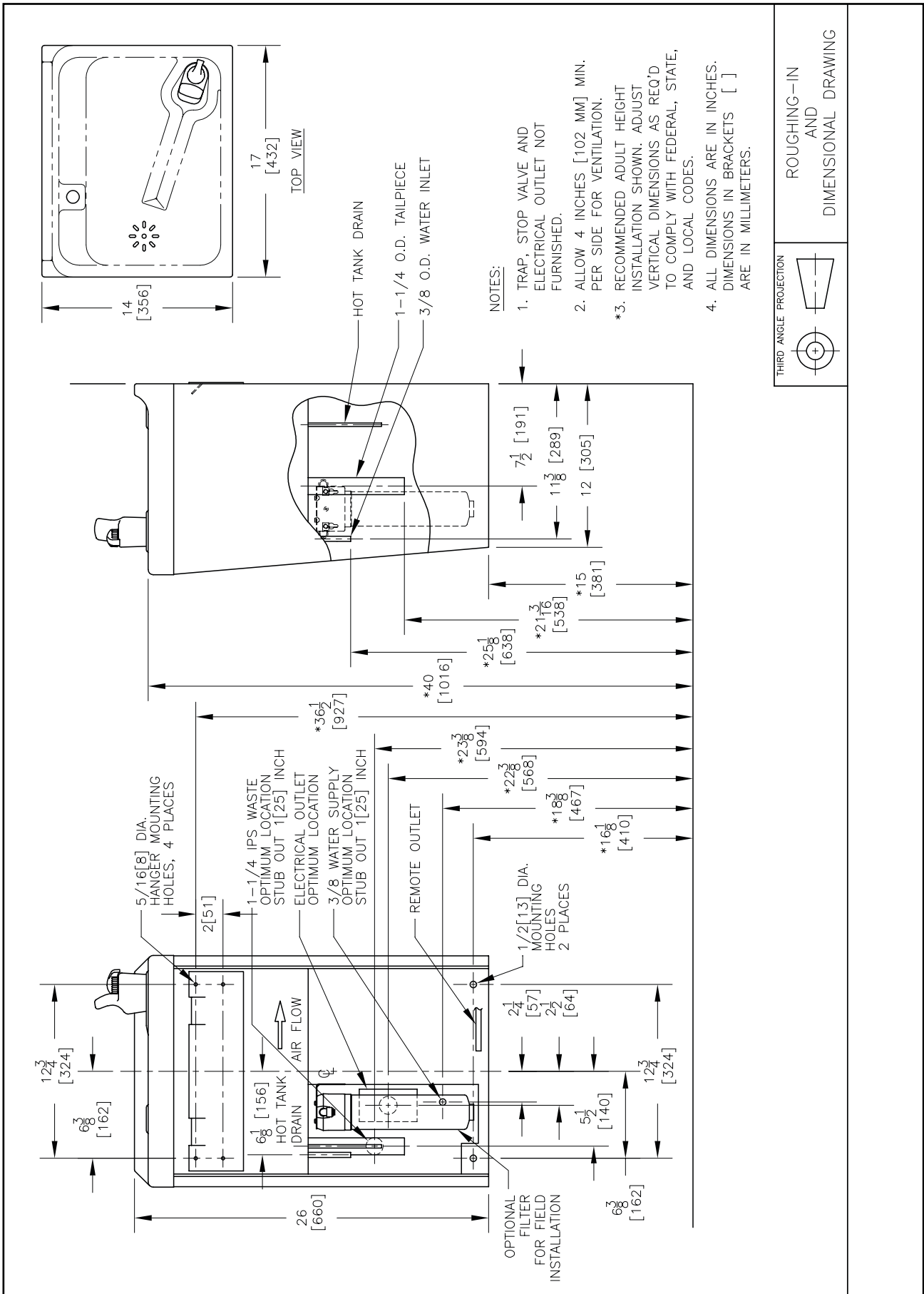


These surface mount drinking fountains are manually activated via the Dial-A-Drink adjustable bubbler.

Complies with ANSI A117.1 and ADA. Shall comply with all relevant CE directives (LVD, EMC, RoHS). Shall comply with ANSI/NSF 61.

Suitable for public building, gymnasiums, sports complexes, hospitals, schools, and offices.

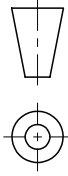
MODEL CODE	PLF8MY	PLF8MHY	PLF14MY	PLF14MHY	PM
ACTIVATION	Mechanical (Dial-A-Drink Adjustable Bubbler with Flexible Bubbler Guard)				
FILTRATION	Green Filter (optional), Built-in 100 micron strainer				
DISINFECTION	Ultra Blu V (optional)				
AUTO-OFF WATER FLOW	No				
DRAINAGE TYPE	Built in drain				
EXTERIOR CHASSIS DIMENSIONS	Brushed Stainless Steel Heavy Duty Galvanised Steel 660(H) x 432(W) x 456(D) mm				
NET WEIGHT	33 kg	35 kg	35 kg	36 kg	16 kg
POWER SUPPLY	220-240V, 50/60 Hz				
HOT 'N' COLD™ MODEL	No	Yes	No	Yes	No
COOLING PERFORMANCE	60 LPH Rated Capacity & Base Rate (10°C in 21°C amb. temp.)		106 LPH Rated Capacity & 60 LPH Base Rate (10°C in 21°C amb. temp.)		Non-Refrigerated
FULL LOAD AMPS	2.5A	4.7A	2.5A	4.7A	-
RATED WATTS	320 W	820 W	320 W	820 W	-
ENERGY SYSTEM	Refrigeration is on only when in use or if water temp increases during long period of standby.				-
COUNTRY OF ORIGIN	Mexico				
CERTIFICATIONS	ANSI/NSF 61, CABO/ANSI A117.1, ADA, CE (LVD, EMC, RoHS)				
WARRANTY	1 Year				



NOTES:

1. TRAP, STOP VALVE AND ELECTRICAL OUTLET NOT FURNISHED.
2. ALLOW 4 INCHES [102 MM] MIN. PER SIDE FOR VENTILATION.
- *3. RECOMMENDED ADULT HEIGHT INSTALLATION SHOWN. ADJUST VERTICAL DIMENSIONS AS REQ'D TO COMPLY WITH FEDERAL, STATE, AND LOCAL CODES.
4. ALL DIMENSIONS ARE IN INCHES. DIMENSIONS IN BRACKETS [] ARE IN MILLIMETERS.

THIRD ANGLE PROJECTION



ROUGHING-IN AND DIMENSIONAL DRAWING

