



## VERSAFILLER PEBFY ■ Contactless + Manual, Non-Refrigerated Hydration Station Combo

This surface mount hydration station combo has two activation methods. The bottle filler includes an electronic sensor for a contactless (touch free) activation and a 30 second shut off timer. The drinking fountain is activated via one of four push-pads.

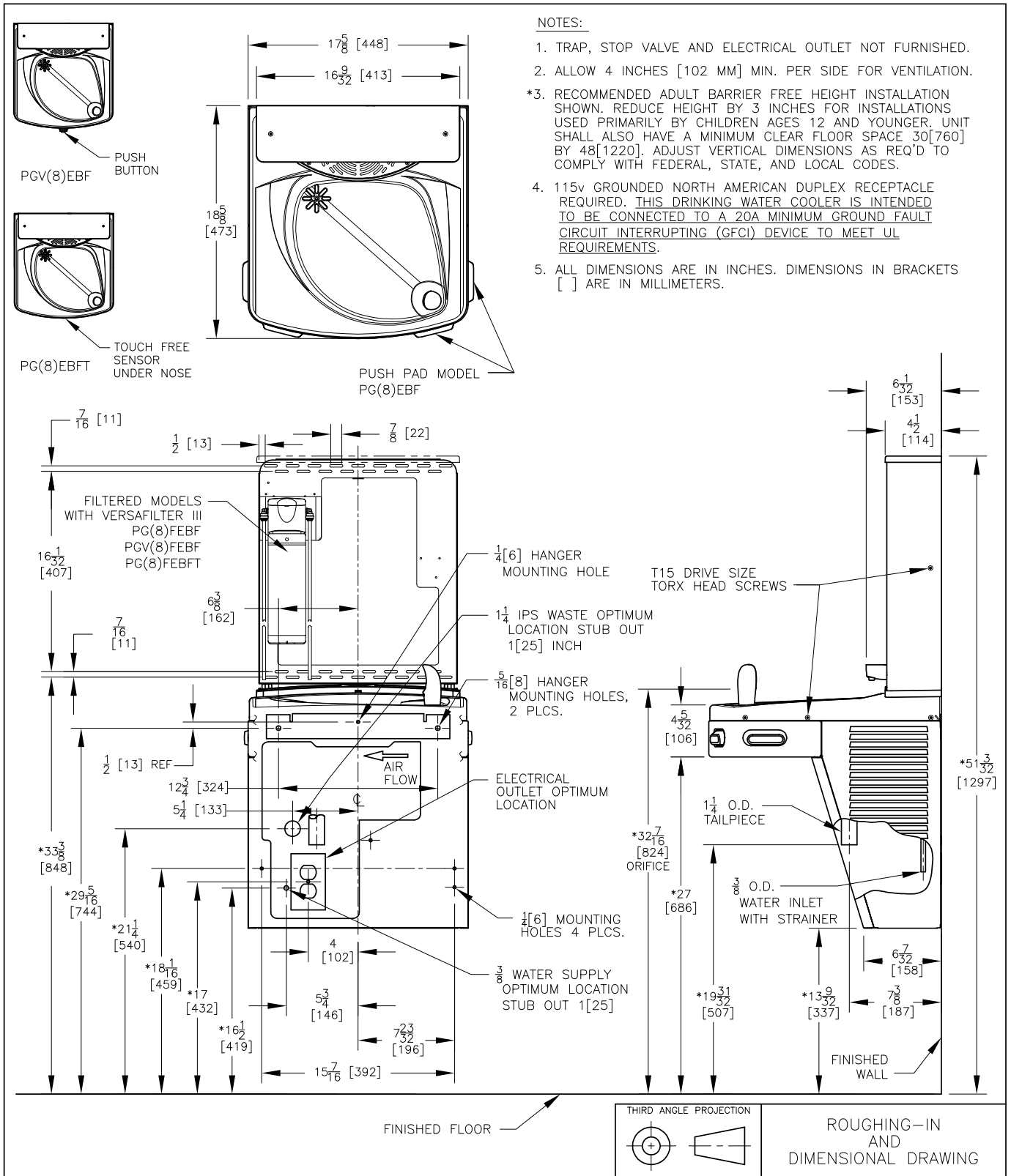
The Bottle Counter conveniently displays the number of times the unit has been used, encouraging the refill of sports bottles.

Key Versafiller moulded components shall contain Freshield, which utilises a silver-based antimicrobial compound that reduces the growth of micro-organisms and mildew to protect the surfaces from discolouration, odours and degradation.

Suitable for public building, gymnasiums, sports complexes, hospitals, schools, and offices.



MODEL CODE	PEBFY 507035
ACTIVATION	Bottle Filler: Contactless (Infrared sensor) Drinking Fountain: Manual (Four push-pads)
SENSOR COVERAGE	Up to 5cm (approx.)
FILTRATION	Green Filter (optional), Built-in 100 micron strainer
DISINFECTION	-
AUTO-OFF WATER FLOW	Bottle Filler: Yes ; Drinking Fountain: No
DRAINAGE TYPE	Built in drain, Removable drip tray
EXTERIOR CHASSIS	Antimicrobial ABS Plastic, Brushed Stainless Steel
DIMENSIONS	Heavy Duty Galvanised Steel
ALCOVE HEIGHT	960(H) x 413(W) x 473(D)
NET WEIGHT	330 mm
POWER SUPPLY	16 kg
COOLING PERFORMANCE	220-240V, 50/60 Hz
FULL LOAD AMPS	-
RATED WATTS	0.1A
ENERGY SYSTEM	7 W
COUNTRY OF ORIGIN	-
CERTIFICATIONS	Mexico
WARRANTY	ANSI/NSF 61, CABO/ANSI A117.1, ADA, CE (LVD, EMC, RoHS), WRAS
	1 Year



www.oasiscoolers.eu  
info@oasis.ie

**OASIS IRELAND**  
Bunree Industrial Estate, Ballina,  
Co. Mayo, F26 D5R3, Ireland.  
+353 96 71222

**OASIS POLAND**  
ul. Gutenberga 20,  
44-164, Gliwice, Poland  
+48 32 332 65 01

