



**M8EBFY** ■ Contactless + Manual, Refrigerated  
**MEBFY** ■ Contactless + Manual, Non-Refrigerated  
 Hydration Station Combo

This surface mount hydration station combo has two activation methods. The bottle filler includes an electronic sensor for a contactless (touch free) activation and a 30 second shut off timer. The radii drinking fountain is activated via the push-button.

The Bottle Counter conveniently displays the number of times the unit has been used, encouraging the refill of sports bottles.

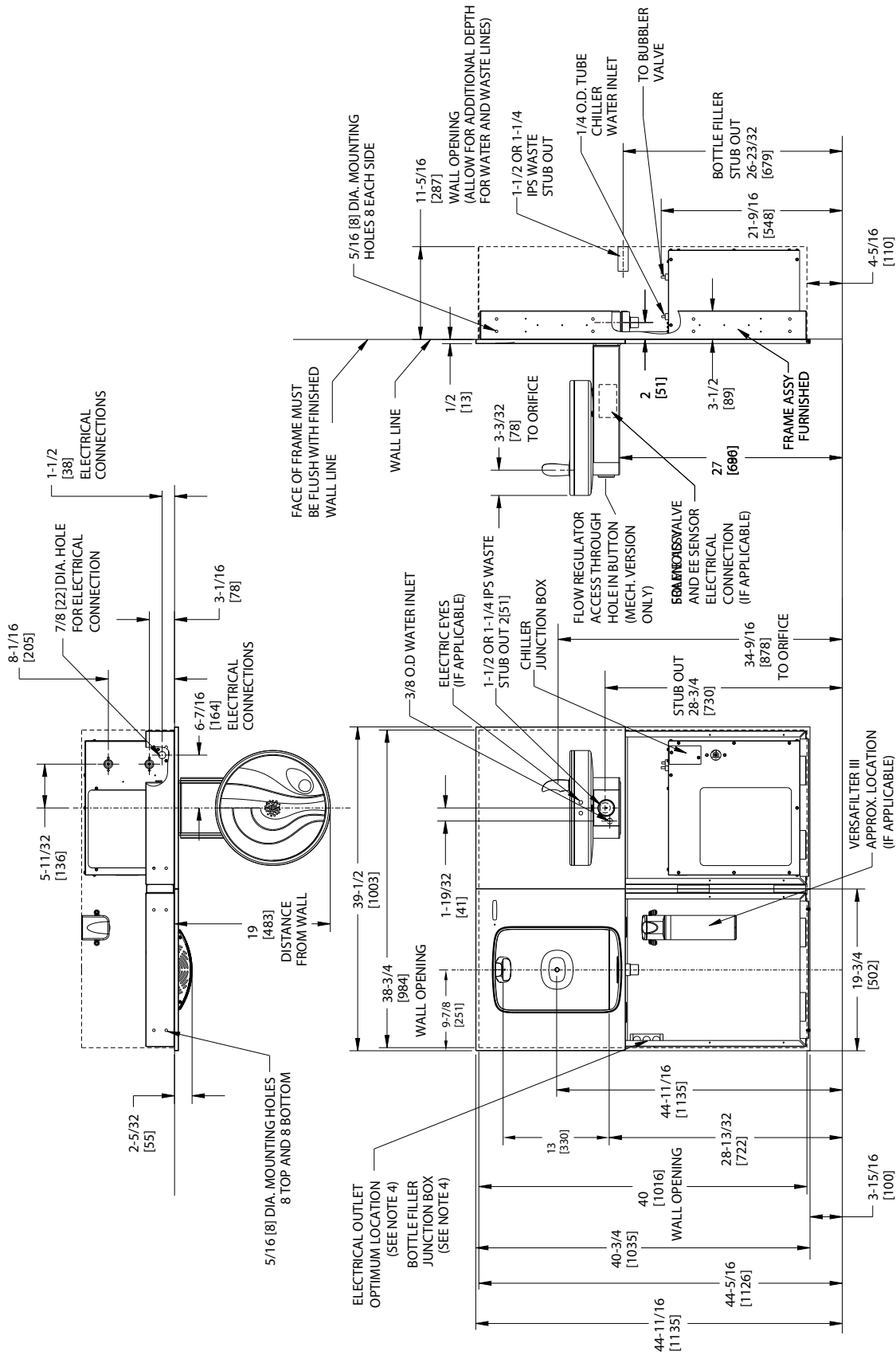
Key moulded components shall contain Freshield, which utilises a silver-based antimicrobial compound that reduces the growth of micro-organisms and mildew to protect the surfaces from discolouration, odours and degradation.

Cooling system uses R-134a or R-290a refrigerant.

Suitable for public building, gymnasiums, sports complexes, hospitals, schools, and offices.



MODEL CODE	M8EBFY 507021E	MEBFY 507018
ACTIVATION	Bottle Filler: Contactless (Infrared sensor) Drinking Fountain: Manual (Push-button)	
SENSOR COVERAGE	Up to 5cm (approx.)	
FILTRATION	Green Filter (optional), Built-in 100 micron strainer	
AUTO-OFF WATER FLOW	Bottle Filler: Yes ; Drinking Fountain: No	
DRAINAGE TYPE	Built in drain, Removable drip tray	
EXTERIOR CHASSIS DIMENSIONS	Antimicrobial ABS Plastic, Brushed Stainless Steel Heavy Duty Galvanised Steel 1035(H) x 1003(W) x 483(D) (287 recessed)	
ALCOVE HEIGHT	330 mm	
NET WEIGHT	73 kg	NA
POWER SUPPLY	220-240V, 50/60 Hz	
COOLING PERFORMANCE	60 LPH Rated Capacity & 60 LPH Base Rate (10°C in 21°C amb. temp.)	-
FULL LOAD AMPS	2.2A	0.1A
RATED WATTS	347 W	7W
ENERGY SYSTEM	Refrigeration is on only when in use or if water temp increases during long period of standby.	-
COUNTRY OF ORIGIN	Mexico	
CERTIFICATIONS	ANSI/NSF 61, CABO/ANSI A117.1, ADA, CE (LVD, EMC, RoHS), WRAS	
WARRANTY	1 Year	



- NOTES:**
1. RECOMMENDED ADULT HEIGHT INSTALLATION SHOWN. ADJUST VERTICAL DIMENSIONS AS REQUIRED TO COMPLY WITH FEDERAL, STATE AND LOCAL CODES.
  2. STOP VALVE, TRAP, PIPE CONNECTOR TO WASTE LINE NOT PROVIDED. SHORT RADIUS TRAP REQUIRED.
  3. ALL DIMENSIONS ARE IN INCHES. DIMENSIONS IN [ ] ARE IN MILLIMETERS.
  4. 115V GROUNDING NORTH AMERICAN DUPLEX RECEPTACLE REQUIRED. THIS DRINKING WATER COOLER IS INTENDED TO BE CONNECTED TO A 20A MINIMUM GROUND FAULT CIRCUIT INTERRUPTING (GFCI) DEVICE TO MEET UL REQUIREMENTS.
  5. FILTER INSTALLATION LOCATIONS WILL VARY BY MODEL.



www.oasiscoolers.eu  
info@oasis.ie

**OASIS IRELAND**  
Bunree Industrial Estate, Ballina,  
Co. Mayo, F26 D5R3, Ireland.  
+353 96 71222

**OASIS POLAND**  
ul. Gutenberga 20,  
44-164, Gliwice, Poland  
+48 32 332 65 01