



AQUAPOINTE MW12SBFY ■ Manual, Refrigerated
AQUAPOINTE MW8SBFY ■ Manual, Refrigerated
AQUAPOINTE MWSBF ■ Manual, Non-Refrigerated
 Bottle Filler

AquaPointe MW12SBFY

Delivering 90LPH of 10°C water at 21°C ambient.
 Cooling system uses R-134a refrigerant.

AquaPointe MW8SBFY

Delivering 60LPH of 10°C water at 21°C ambient.
 Cooling system uses R-134a refrigerant.

AquaPointe MWSBF

Delivering ambient drinking water.



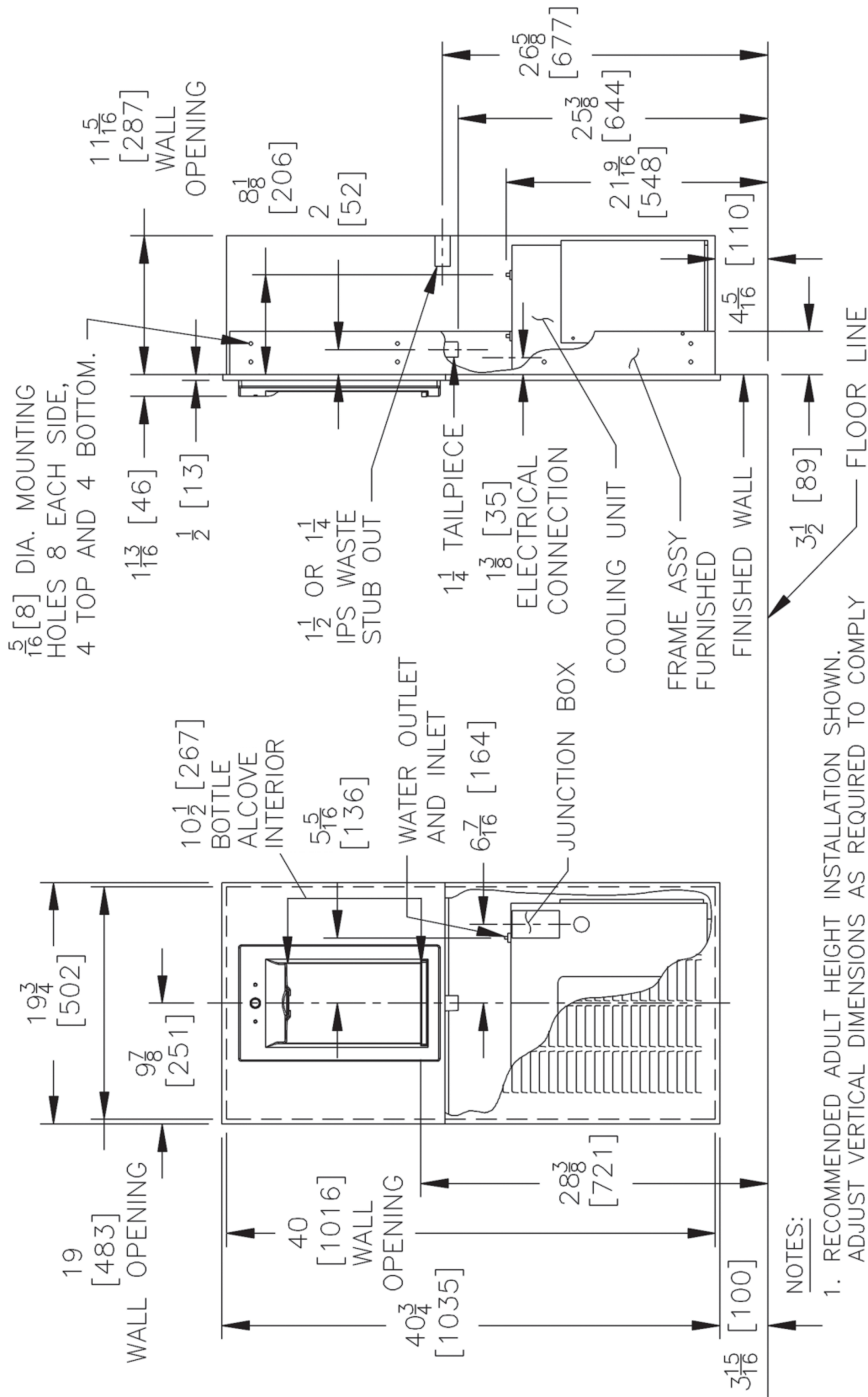
These fully recessed mount, bottle fillers are manually activated with a push of the touch-button.

Key AquaPointe moulded components shall contain Freshield, which utilises a silver-based antimicrobial compound that reduces the growth of micro-organisms and mildew to protect the surfaces from discolouration, odours and degradation.

Complies with ANSI A117.1 and ADA. Shall comply with all relevant CE directives (LVD , EMC, RoHS). Shall comply with ANSI/NSF 61.

Suitable for public building, gymnasiums, sports complexes, hospitals, schools, and offices.

MODEL CODE	MW12SBFY	MW8SBFY	MWSBF
ACTIVATION	Manual (Touch-Button)		
FILTRATION	Green Filter (optional), Built-in 100 micron strainer		
AUTO-OFF WATER FLOW	No		
DRAINAGE TYPE	Built in drain, Removable drip tray		
EXTERIOR CHASSIS	Antimicrobial ABS Plastic, Brushed Stainless Steel		
DIMENSIONS	1035(H) x 502(W) x 46(D) (287recessed) mm		
ALCOVE HEIGHT	265 mm		
NET WEIGHT	35 kg		12 kg
POWER SUPPLY	220-240V, 50/60 Hz		
COOLING PERFORMANCE	90 LPH Rated Capacity & Base Rate (10°C in 21°C amb. temp.)	60 LPH Rated Capacity & Base Rate (10°C in 21°C amb. temp.)	Non-Refrigerated
FULL LOAD AMPS	3.7A	2.2A	-
RATED WATTS	620 W	340 W	-
COUNTRY OF ORIGIN	Mexico		
CERTIFICATIONS	ANSI/NSF 61, CABO/ANSI A117.1, ADA, CE (LVD, EMC, RoHS) , WRAS		
WARRANTY	1 Year		



NOTES:

1. RECOMMENDED ADULT HEIGHT INSTALLATION SHOWN. ADJUST VERTICAL DIMENSIONS AS REQUIRED TO COMPLY WITH FEDERAL, STATE AND LOCAL CODES.
2. STOP VALVE, TRAP, PIPE CONNECTOR TO WASTE WASTE LINE NOT PROVIDED.
3. ALL DIMENSIONS ARE IN INCHES. DIMENSIONS IN BRACKETS [] ARE IN MILLIMETERS.



www.oasis.ie
www.oasisbottlefillers.com
info@oasis.ie

OASIS IRELAND
Bunree Industrial Estate, Ballina,
Co. Mayo, F26 D5R3, Ireland.
+353 96 71222

OASIS POLAND
ul. Gutenberga 20,
44-164, Gliwice, Poland
+48 32 332 65 01