



AQUAPOINTE HYDRATION STATION

Technical Sheet

MWEBFY RW ■ Contactless, Non-Refrigerated

MW2EBFY RW ■ Contactless, Refrigerated

MW8EBFY RW ■ Contactless, Refrigerated

Bottle Filler

AquaPointe Hydration Station is perfect for those high traffic areas. With a contactless, touch-free activation - there are no fears of cross-contamination.

Designed for urban settings, the sloped top prevents trash being placed on the unit. Additionally, the powder-coat steel finish is highly-durable. This unit can be installed right against the wall to save-space. This unit can be installed right against the wall to save-space. Easily serviced with removable lower panel for quick access to filters, electronics and chiller.

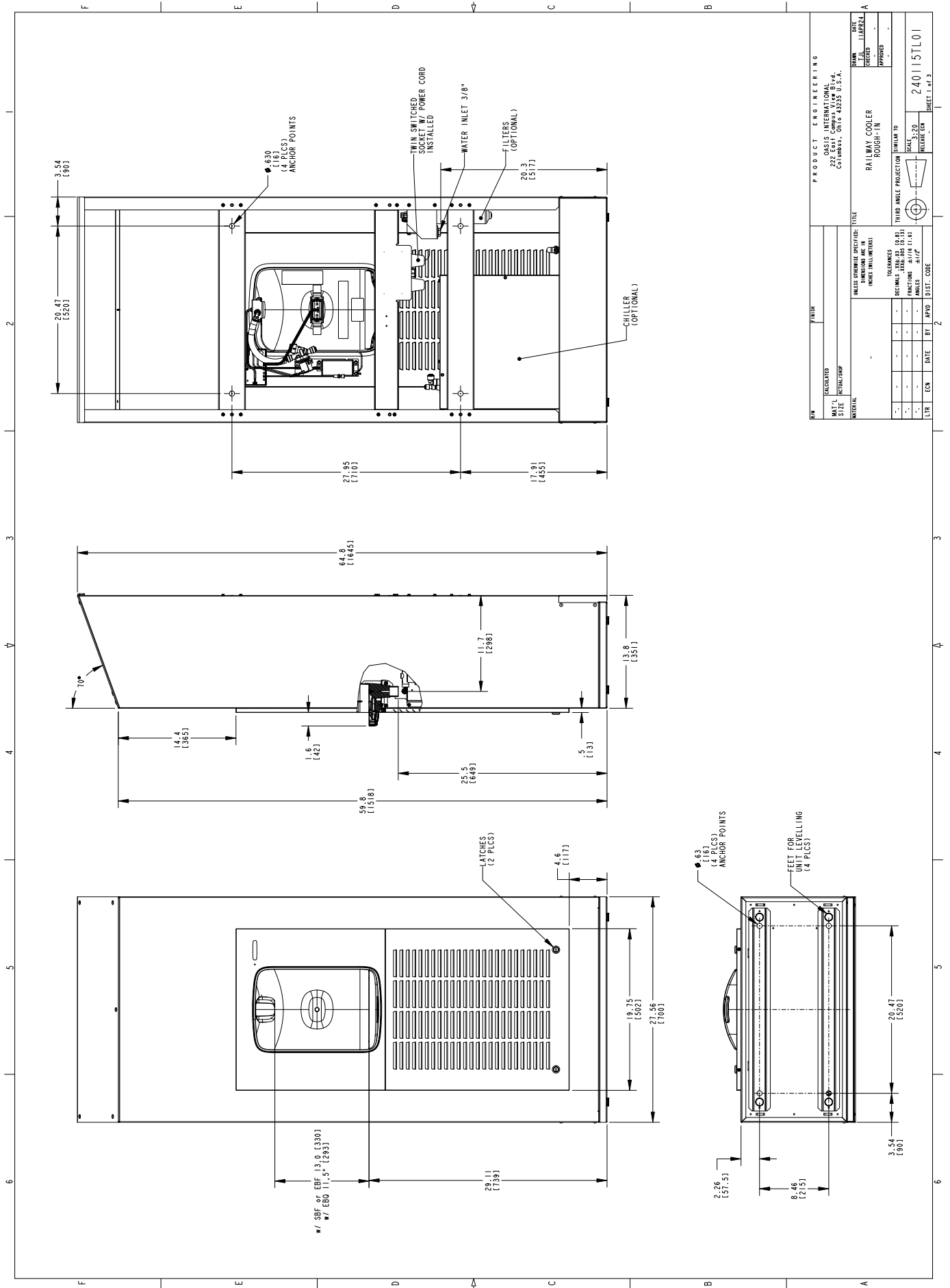
AquaPointe Hydration Station comes as standard in white. There is ample space for potential branded wrapping to add commercial value to this unit if you so wish.

Chilled and Non-chilled models are available both with or without Quasar; our UVC LED that kills 99.99% of bacteria at the point of dispense.

The cooling system uses R-134a or R-290. The R290 refrigerant is mandatory for countries subject to the F-Gas Directive. R134a refrigerant available for other markets.



MODEL CODE	MWEBFY RW	MW2EBFY RW	MW8EBFY RW
ACTIVATION		Contactless (Infrared sensor)	
SENSOR COVERAGE		Up to 5cm (approx.)	
FILTRATION		Optional Green Filter / VersaFilter III	
DISINFECTION		Optional Quasar UVC LED	
Auto-Off Water Flow		Yes	
FLOW RATE		4.2LPM	
DRAINAGE TYPE		Built in drain, Removable drip tray	
COLOUR		Standard White; Optional custom colours or wrapping.	
EXTERIOR		Brushed Stainless Steel	
CHASSIS		Heavy Duty Galvanised Steel	
DIMENSIONS		1505mm (H) x 700mm (W) x 350mm (D)[mm]	
ALCOVE HEIGHT		330 mm	
NET WEIGHT	49 kg	64 kg	73 kg
POWER SUPPLY		220-240V, 50/60 Hz	
COOLING PERFORMANCE	N/A	19.5 LPH Rated Capacity & Base Rate (10°C in 21°C amb. temp.)	60 LPH Rated Capacity & Base Rate (10°C in 21°C amb. temp.)
FULL LOAD AMPS	0.1 A	0.8 A	2.2 A
RATED WATTS	7 W	102 W	347 W
ENERGY SYSTEM		Refrigeration is on only when in use or if water temp increases during long period of standby.	
COUNTRY OF ORIGIN		Poland	
CERTIFICATIONS		CE (LVD, EMC, RoHS)	
WARRANTY		1 Year	



PRODUCT ENGINEERING		OASIS INTERNATIONAL 2755 WILSON ROAD COLUMBUS, OHIO 43235 U.S.A.	
DESIGNED BY	APPROVED BY	RAILWAY COOLER ROUGH-IN	
DRAWN BY	DATE	TITLED TO	
SCALE	3:20	TYPED AND PLOTTED BY	
REVISIONS		TOLERANCES UNLESS SPECIFIED OTHERWISE	
		DIMENSIONS ARE IN INCHES UNLESS NOTED OTHERWISE	
		ANGLES ARE IN DEGREES UNLESS NOTED OTHERWISE	
LTR	ECN	DATE	BY
		APPROVED	DIST. CODE
SHEET NO. 2		SHEET TOTAL 3	
24015TL01		24015TL01	



www.oasis.ie
www.oasiscoolers.com
info@oasis.ie

OASIS IRELAND
Bunree Industrial Estate, Ballina,
Co. Mayo, F26 D5R3, Ireland.
+353 96 71222

OASIS POLAND
ul.Gutenberga 20,
44-164, Gliwice, Poland
+48 32 332 65 01