



Point-Of-Use Coolers Catalogue



EEU0001-C-2008

A teal background with a water splash effect on the left side. The splash is a vertical column of water with droplets, set against a blurred teal background.

CONTENTS.

About OASIS	1
Industry	3
Technology	5
Point-Of-Use	7
Technical Specifications	19
Why OASIS	23
Certifications & Approvals	24

ABOUT OASIS.

OASIS is a subsidiary of OASIS International. The OASIS brand is the recognized worldwide leader in the design and manufacturing of bottled and pressure water coolers.

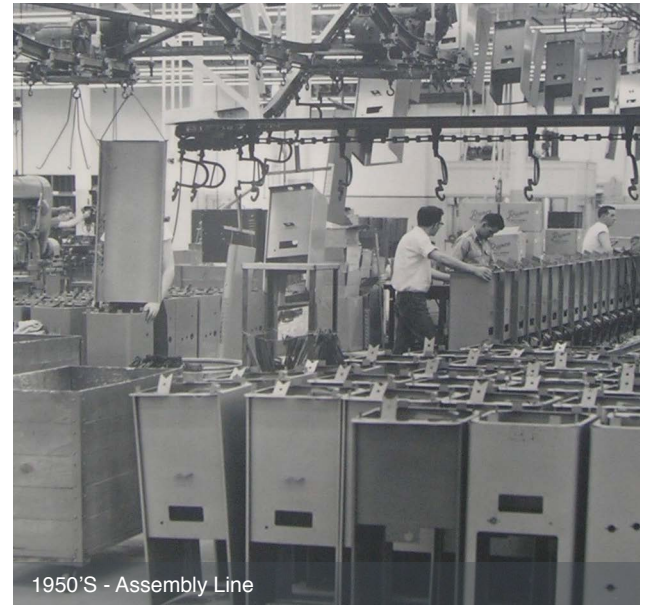
We also provide Point-of-Use filtration equipment, non-refrigerated drinking fountains and dehumidifiers. Our products are distributed to over 100 countries through our worldwide sales and warehousing network. Timely delivery is critical to our customers and of paramount importance to us.

OASIS is headquartered in Ballina, Ireland with an integrated manufacturing facility in Gliwice, Poland. Factory sales people and warehouses are based throughout Europe, Russia and the Middle East to serve our customers.

OASIS International corporate headquarters are located in Columbus, Ohio and the company also has a manufacturing facility in Monterrey, Mexico.



1958 - Assembly Line



1950'S - Assembly Line

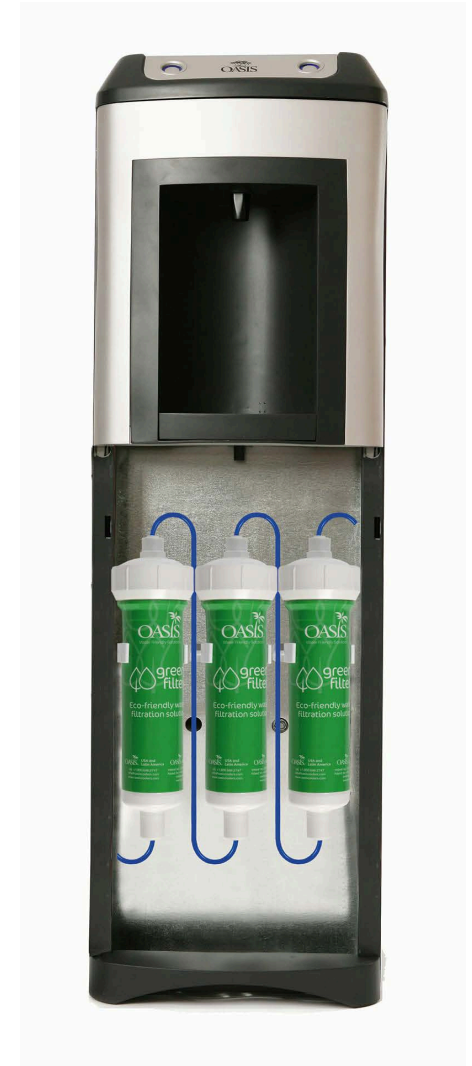
**Since 1910, we've
focused on only one
thing:**

**Delivering refreshing
water to the world.**

OASIS was founded in 1910 and from the very beginning, innovation is what characterized the company.

Point-Of-Use (POU) is the bottle-less system that connects directly to your premises existing water mains. Combined with industries finest filtration systems, OASIS POU's provide healthy refreshing water.

- 1922: First point-of-use “bubbler”
- 1954: First Hot ‘N Cold model is designed
- 1990: First point-of-use systems integrated with filters are marketed
- 2006: Kalix POU model with PVDC system introduced
- 2010: Kalix POU Carbo Co2oler with PVDC system introduced



KaliX with green filter system.

INDUSTRY.

OASIS' Point-Of-Uses cater to an endless variety of environment.

Predominantly in public and social areas that share high volume of users on a daily basis.

Corporate Campuses: Offices, gyms, canteens, etc.

Transportation Depots: Train Stations, Airports, Bus depots, etc.

Healthcare: Hospitals, GP offices, etc.

Education: Schools, Universities, canteens, etc.

This is where product demand and sanitisation risks are both at their peaks.

With this in mind, OASIS continually ensures that our products are the most hygienic and healthful. With the incorporation of advanced technology and by accomplishing design & engineering feats, means that ease of sanitisation has never been easier.

Our units are sustainable, with reliability you can count on - just like our continuous support system we provide before and after sales.

Over 100 years of high quality design and manufacturing.



Transportation



Corporate Campuses



Education



Healthcare

TECHNOLOGY.

OASIS offer a wide range of POU coolers and operating technologies to satisfy different customer needs. There are two main technologies that are used:

- Direct Chill Cooling
- Reservoir Cooling

Direct Chill:

The KaliX range of POU water coolers utilise Pressure Vessel Direct Chill (PVDC) cooling technology. The heart of the PVDC system is the two-piece cooling tank made from AISI Grade 304 stainless steel. This pressurized tank provides a volume of 1.5 litres of cold water (20 Litres per hour) available on demand. Benefits of the PVDC system include:

- Two piece tank can be opened for service / maintenance
- Tank is enclosed in two piece injection moulded EPS insulation to minimise thermal losses and maintain the water temperature within the tank
- The sealed tank design protects the water in the tank from contamination from external sources (e.g. air borne contaminants)

The CO₂ mixer tank

The CO₂ mixer tank is located inside the PVDC cooling tank which helps to maintain the cold water temperature of the carbonated water prior to dispense. The mixer tank has been moulded from FDA & CE approved plastics. As carbonated water is dispensed, the mixer tank is automatically refilled with cold water & CO₂ gas, ensuring that a continuous supply of carbonated water is available

Reservoir Coolers:

OASIS offers reservoir based POU coolers using both the iconic Removable Reservoir cooling system and traditional fixed stainless steel reservoirs.

REMOVABLE RESERVOIR:

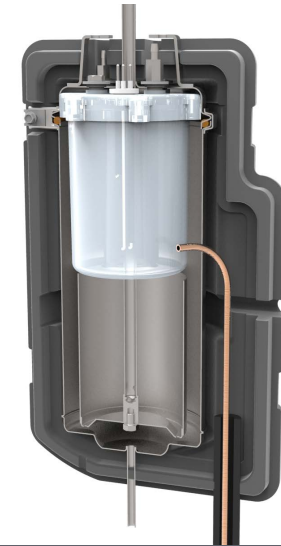
- Modular-design
- Easy to disassemble
- Long lasting materials
- Minimizes spare parts
- Value for money
- New OASIS repair and refurbishment service
- Optional two-piece hot tank

Fixed Stainless Steel Reservoir:

- Entry level product offering excellent cooling performance at the most cost effective price point

Dual-Float:

- All OASIS reservoir coolers use a dual-float system to control the water flow into the reservoir. The primary float will close, shutting off the water supply to the reservoir, as the water level inside the reservoir rises. When water is dispensed from the cooler, the primary float will open, allowing the reservoir to refill.
- If the primary float should fail to shut off the water supply for any reason, then as the water level continues to rise, the back up float will actuate and shut off the water supply. The additional security of the back up float minimises the risk of water leaks.



CO₂ mixer tank



Dual-Float

POINT-OF-USE.



KaliX

P1PVKY
 (P1PVCDKY)
 P1PVHSY
 (P1PVCDHSY)
 P1PVHSKY
 (P1PVCDHSKY)



KaliX CO₂

P1PVECKY
 (P1PVECCDKY)
 P1PVECHSY
 (P1PVECCDHSY)



AQUABAR II

POU2LRHKY



P1TR

P1TRKY



MIRAGE 2

MIR311DY



P1AQ

P1AQKY



QUARTZ POU

POUM1TRKY
POUM1TRHSY



POU1RR

POU1RRKY
POU1RRHSY



AQUARIUS POU

POUQ1RRKY
POUQ1RRHSY



ONYX POU

POU1CCTKY
POU1CCTHSY

— REMOVABLE RESERVOIR COOLERS —



KaliX

Special Features

- Push button water dispensing
- Safety lock hot button
- Optional Mechanical Autodrain
- Optional factory installed green filter system
- Integrated cup dispenser (CD Models only)
- Large alcove for refilling sports bottles & carafes
- Pressure Vessel Direct Chill technology

Codes

- P1PVKY (P1PVCDKY)
- P1PVHSY (P1PVCDHSY)
- P1PVHSKY (P1PVCDHSKY)



Colour Options

- Silver & Dark Grey
- Light Grey & Dark Grey
- LUXE LINE:**
- LUXE Silver & White
- LUXE Gold & White

OASIS's **KaliX** presents itself with features that all great coolers possess; from simple design, ease of use, and maintenance, to a refreshing cup of water.

Designed for effortless servicing and sanitisation, the front door panel allows for easy access to filters.

OASIS Direct Chill Point of Use Coolers offer significant hygiene benefits. As the water enters the system, it passes into a pressure vessel and is chilled as it moves through the vessel to the point of dispense. This provides a consistent delivery of chilled water as the water does not come into contact with air until it is dispensed.

Unique to **KaliX** is our KaliX Mechanical AutoDrain to help prevent overflowing drip trays.



KaliX CO₂

Special Features

- Push button water dispensing
- Safety lock hot button
- Optional Mechanical Autodrain
- Optional factory installed green filter system
- Integrated cup dispenser (CD Models only)
- Large alcove for refilling sports bottles & carafes
- Pressure Vessel Direct Chill technology
- CO₂ concentration levels similar to branded bottled sparkling water

Codes

- P1PVECKY (P1PVECCDKY)
- P1PVECHSY (P1PVECCDHSY)



Colour Options

- Silver & Dark Grey
- Light Grey & Dark Grey

LUXE LINE:

- LUXE Silver & White
- LUXE Gold & White

A proud addition to the KaliX range, OASIS present the **KaliX CO₂**; offering CO₂ concentration levels of 5.2 – 5.6 g/l that are similar to leading branded bottled sparkling water. This timeless unit is designed for effortless servicing and sanitisation, the front door panel allows for easy access to filters.

OASIS Direct Chill Point of Use Coolers offer significant hygiene benefits. As the water enters the system, it passes into a pressure vessel and is chilled as it moves through the vessel to the point of dispense. This provides a consistent delivery of chilled water as the water does not come into contact with air until it is dispensed.

Combining carbonation technology with the Kalix PVDC cooling system, the **KaliX CO₂** provides the most refreshing and sparkling water on the market!

Unique to KaliX is our KaliX Mechanical AutoDrain to help prevent overflowing drip trays.



AQUABAR II

Special Features

- Safety lock hot button
- 15 litre Stainless Steel Reservoir
- Large internal filter compartment
- Suitable for use with Reverse Osmosis water treatment systems

Codes

- POU2LRHKY   

Colour Options

- Black & Grey

The **AQUABAR II** is the OASIS heavy duty reservoir Point-Of-Use cooler.

This ABS injection moulded & removable metal side panel cooler, boasts of its 15 litre stainless steel fixed reservoir with external refrigerant coil and 1.5 litre stainless steel hot tank.

Delivering the freshest of water in 3 temperatures: hot, ambient, and cold.



P1TR

Special Features

- One piece blow moulded cabinet
- Pressure Vessel Direct Chill cooling technology

Codes

- P1TRKY



Colour Options

- Silver & Grey

The **P1TR** is OASIS's tall and elegant alternative to the standard POU. Combined with a discrete waistline and an elongated oval water-dispense-area, the sleek accentuation of the **P1TR** is a modern and timeless design.

This unit is easy to sanitise from the cabinetry to the large capacity drip tray, which is dishwasher safe.

OASIS Direct Chill Point of Use Coolers offer significant hygiene benefits. As the water enters the system, it passes into a pressure vessel and is chilled as it moves through the vessel to the point of dispense. This provides a consistent delivery of chilled water as the water does not come into contact with air until it is dispensed.



MIRAGE 2

Special Features

- Dual Use - Bottle or POU operation
- Indicator lights for hot & cold systems

Codes

MIR311DY



Colour Options

- Black

The **MIRAGE 2** is the stylish addition to any contemporary kitchen or break room.

This unit can be easily converted from bottled cooler to POU operation.

This flexible water dispenser provides hot, ambient, and cold water on demand from either source.



P1AQ

Special Features

- One piece blow moulded cabinet
- Pressure Vessel Direct Chill cooling technology

Codes

- P1AQKY



Colour Options

- White & Blue
- Dark Grey & Black

OASIS's **P1AQ** is easily serviceable and easy to maintain. Throughout its years of service, the durable cabinetry of the **P1AQ** will retain its out-of-box appearance.

This unit is easy to sanitise from the cabinetry to the large capacity drip tray, which is dishwasher safe.

OASIS Direct Chill Point of Use Coolers offer significant hygiene benefits. As the water enters the system, it passes into a pressure vessel and is chilled as it moves through the vessel to the point of dispense. This provides a consistent delivery of chilled water as the water does not come into contact with air until it is dispensed.



Special Features

- REMOVABLE RESERVOIR
- Inside-Out cooling probe
- Efficient and proven technology
- High quality = longevity
- Great quality-performance-price ratio
- Range of hot tanks available

Codes

- POUM1TRKY
- POUM1TRHSY



Colour Options

- Stainless Steel & Black
- Blue & Black
- Red & Black
- Dark Grey & Black

The **QUARRTZ's** sleek, stainless steel body with contrasting ABS injection moulded trims creates a sophisticated modern aesthetic. With its innovative cabinet design, hot tank replacement can be accomplished in just 4 minutes.

The 'inside-out' cooling probe design used throughout the entire range of REMOVABLE RESERVOIR coolers ensures a more efficient cooling method, conserving energy and eliminating condensation within the cooler.

The self supporting cooler chassis can be quickly and easily removed from the cabinet to simplify the maintenance and servicing process. The REMOVABLE RESERVOIR system simplifies the sanitization process - just replace the water contact parts with pre-sanitized components. Requires no replacement of disposable parts or use of messy chemicals at your customer site.

QUARRTZ Service-Friendly water cooler improves the access to the quick connect hot tank and other internal parts, replacing the Hot Tank now takes only 4 minutes compared to 10 minutes for our traditional RR models. A service technician can now work on a cooler without removing the chassis from the cabinet, also avoiding any possible accidental wire disconnection. To service the cooler, only one screw needs to be removed.



POU1RR

Special Features

- REMOVABLE RESERVOIR
- Inside-Out cooling probe
- Efficient and proven technology
- High quality = longevity
- Great quality-performance-price ratio
- Range of hot tanks available

Codes

- POU1RRKY 
- POU1RRHSY 

Colour Options

- White & Granite
- Grey & Black

The original iconic design.

The blow-moulded polycarbonate body provides maximum strength.

The 'inside-out' cooling probe design used throughout the entire range of REMOVABLE RESERVOIR coolers ensures a more efficient cooling method, conserving energy and eliminating condensation within the cooler.

The self supporting cooler chassis can be quickly and easily removed from the cabinet to simplify the maintenance and servicing process.

The REMOVABLE RESERVOIR system simplifies the sanitization process - just replace the water contact parts with pre-sanitized components. Requires no replacement of disposable parts or use of messy chemicals at your customer site.

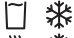
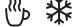


AQUARIUS POU

Special Features

- REMOVABLE RESERVOIR
- Inside-Out cooling probe
- Efficient and proven technology
- High quality = longevity
- Great quality-performance-price ratio
- Range of hot tanks available

Codes

- POUQ1RRKY 
- POUQ1RRHSY 

Colour Options

- White & Blue
- Dark Grey & Blue

The classic design of the **AQUARIUS POU** offers the functionality and advantages of the RR system at the most competitive price point.

The 'inside-out' cooling probe design used throughout the entire range of REMOVABLE RESERVOIR coolers ensures a more efficient cooling method, conserving energy and eliminating condensation within the cooler.

The self supporting cooler chassis can be quickly and easily removed from the cabinet to simplify the maintenance and servicing process

The REMOVABLE RESERVOIR system simplifies the sanitization process - just replace the water contact parts with pre-sanitized components. Requires no replacement of disposable parts or use of messy chemicals at your customer site

ONYX POU

Special Features

- Efficient and proven technology
- High quality = longevity
- Great quality-performance-price ratio

Codes

- POU1CCTKY  
- POU1CCTHSY  

Colour Options

- Dark Grey & Stainless Steel



The sophisticated and clean line design of the **ONYX POU** is ideal for the home countertop, acting as a haven for guests and home owners alike.

A blue LED spotlight illuminates the dispensing area as the water is being released. At the bottom sits a removable drip tray, making home maintenance a simple task.

The compact unit that is **ONYX POU** is renowned for its appearance within the home and its refreshing water.

TECHNICAL SPECIFICATIONS.

precision
engineering

Product	KaliX CO ₂	
	P1PVECKY	P1PVECHSY
Model	P1PVECCDKY	P1PVECCDHSY
Type	Cook & Cold & Carbo	Hot & Cold & Carbo
Weight (kg)	30.4	31.7
Cold Tank Capacity (litres)	1.5	1.5
Hot Tank Capacity (litres)	-	1.5
Dimensions (cm)	112hx 32w x 38d	112hx 32w x 38d
Power consumption (Watts)	100	620
Total Current (Amps)	0.8	3
Cold Water Performance (litres/hr)		
21°C ambient	20	20
27°C ambient	-	-
32°C ambient	8.5	8.5
38°C ambient	-	-
Hot Water Performance (litres/hr)	-	7.9

Product	KaliX			AQUABAR	P1TR	MIRAGE 2 POU
Model	P1PVKY	P1PVHSY	P1PVHSKY	POU2LRHKY	P1TRKY	MIR311DY
	P1PVCDKY	P1PVCDHSY	P1PVCDHSKY			
Type	Cook & Cold	Hot & Cold	Tri-Temp	Tri-Temp	Cook & Cold	Tri-Temp
Weight (kg)	23.4	24.6	24.6	27	N/A	16.5
Cold Tank Capacity (litres)	1.5	1.5	1.5	15	1.5	2.2
Hot Tank Capacity (litres)	-	1.5	1.5	1.5	-	1.2
Dimensions (cm)	112hx 32w x 38d	112hx 32w x 38d	112hx 32w x 38d	115hx 32.5w x 42.5d	112h x 38w x 34d	104h x 31w x 33d
Power consumption (Watts)	100	620	620	600	100	545
Total Current (Amps)	0.8	2.8	2.8	2.8	0.8	2.4
Cold Water Performance (litres/hr)						
21°C ambient	20	20	20	-	-	5.1
27°C ambient	-	-	-	-	-	-
32°C ambient	8.5	8.5	8.5	8	8	-
38°C ambient	-	-	-	-	-	-
Hot Water Performance (litres/hr)	-	7.9	7.9	7.9	-	7.9

Product	P1AQ	QUARRTZ POU		POU1RR	
Model	P1AQKY	POUM1TRKY	POUM1TRHSY	POU1RRKY	POU1RRHSY
Type	Cook & Cold	Cook & Cold	Hot & Cold	Cook & Cold	Hot & Cold
Weight (kg)	14	17	18.9	13.9	14.8
Cold Tank Capacity (litres)	1.5	2.2	2.2	2.2	2.2
Hot Tank Capacity (litres)	-	-	1.5	-	1.5
Dimensions (cm)	98h x 32w x 32d	123h x 30.5w x 32d	123h x 30.5w x 32d	101h x 33w x 33d	101h x 33w x 33d
Power consumption (Watts)	100	95	600	95	600
Total Current (Amps)	0.8	0.8	2.4	0.8	2.4
Cold Water Performance (litres/hr)					
21°C ambient	-	5.9	5.2	5.9	5.2
27°C ambient	-	4.2	3.1	4.2	3.1
32°C ambient	8	2.5	2.2	2.5	2.2
38°C ambient	-	1.7	1.5	1.7	1.5
Hot Water Performance (litres/hr)	-	-	7.9	-	7.9

Product	AQUARIUS POU		ONYX POU	
Model	POUQ1RRKY	POUQ1RRHSY	POU1CCTKY	POU1CCTHSY
Type	Cook & Cold	Hot & Cold	Cook & Cold	Hot & Cold
Weight (kg)	13.8	14.7	12	13
Cold Tank Capacity (litres)	2.2	2.2	2.2	2.2
Hot Tank Capacity (litres)	-	1.5	-	1
Dimensions (cm)	98hx 32w x 32d	98hx 32w x 32d	45.5h x 31w x 36d	45.5h x 31w x 36d
Power consumption (Watts)	95	600	95	545
Total Current (Amps)	0.8	2.4	0.8	2.4
Cold Water Performance (litres/hr)				
21°C ambient	5.2	4.6	4.6	4.6
27°C ambient	3.5	3.1	3	3
32°C ambient	1.8	1.6	2.1	2.1
38°C ambient	1	0.9	1.5	1.5
Hot Water Performance (litres/hr)	-	7.9	-	7.9

WHY OASIS...

There are many reasons to choose OASIS as your solution to your air or water dilemma.

Here are just a few:

- Our products are Industry leading
- We are reliable
- Our designs are ethical
- Variety of products
- Economical
- Our team can aid you with their specialist knowledge, technical support and advice
- Our flexible and friendly approach
- We can create bespoke units; tailored to your needs

CERTIFICATIONS & APPROVALS.

** Please note this list is not exhaustive.*



ACS
Attestation de Conformité Sanitaire



WRAS



ISO 9001: 2008
Quality management systems



ISO 14001: 2004
Environmental management systems



ISO 22000: 2005
Food safety management systems



CCA-NTR/ CB/ EMC
Conformity with European Directives: LVD - Low Voltage Directive and EMC - Electromagnetic Compatibility Directive



CCC
Approved to sell products in China.

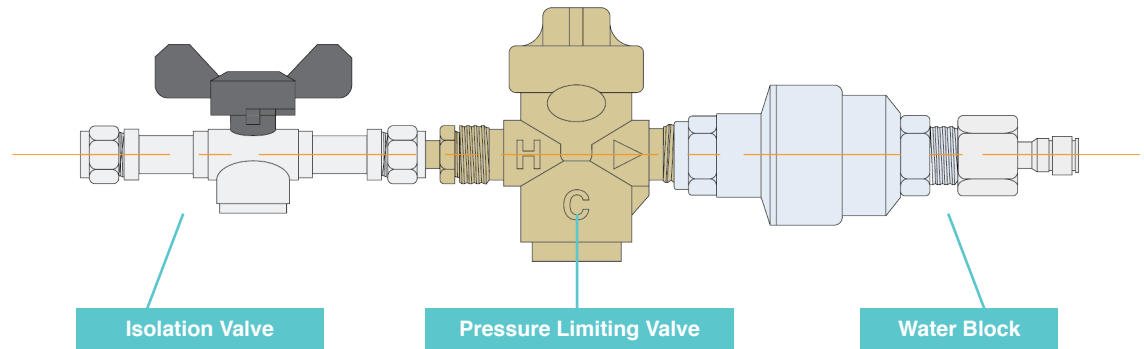


SASO
(Certificate of Conformity for Exports to Saudi Arabia) - Statement for Registration

INSTALLATION KIT. ■

OASIS POU COOLER INSTALLATION KIT
Compression Fitting Version
034653-003

- This kit is an 'all in one rail', which when properly installed will regulate the feed water used to supply a water dispensing device.
- The kit includes an isolation valve with double non return, a pressure limiting valve set at 3 bar and a water block, which will stop the water flow if a pre set volume has been exceeded. The inlet of the kit is 15mm compression and the outlet is ¼" push fit.
- This kit should only be fitted to a mains cold water supply / boosted mains, not a tank fed supply.
- The kit features twin 'type approved' non return valves and thereby complies with the current WRAS / EPDWA regulations for supplying coolers and carbonators.
- *For further details consult your supplier.*



Installation Procedure

The feed water kit should be fitted to a suitable 15mm mains cold water pipe made of copper. Alternative kits are available for plastic pipe work, please consult your supplier. The pipe work should be clean, free from bends / dents and should not be painted. The kit should be mounted vertically and in a position to allow for the access to individual components, for altering the settings.

Altering The Settings

To alter the maximum feed water pressure, turn the slot on top of the chrome pressure limiting valve either clock / anti – clockwise.

To alter the maximum volume of water to be discharged in any given instance, firstly remove the ¾" x ¼" adaptor from the outlet of the grey water block device. Inside the outlet there is a pointer that can be aligned with one of the figures around the circumference. Each figure equates to 1 gallon. A standard kit is set on 2 (i.e. 9 litres). The maximum setting is approximately 50 litres.

OASIS IRELAND

Bunree Industrial Estate,
Ballina, Co. Mayo, Ireland,
+353 96 71222

OASIS POLAND

ul. Gutenberga 20,
44-164, Gliwice, Poland
+48 32 332 65 01

www.oasis.ie

info@oasis.ie