



INSTRUCTION MANUAL

OASIS D150/D165 FAN MOTOR CHANGE



For your protection, always disconnect the service cord from the electrical outlet and remove the water receptor before starting service and/or maintenance.

PARTS REQUIRED TO CHANGE FROM EBM to SAIWEI FAN MOTOR

D150 / D165	Description	Qty
043943-001	MOTOR, FAN - 230V	1
043944-001	BLADE, FAN (28 DEGREE)	1
022625-002	BRACKET, FAN MOTOR	1
Incl with Fan Motor	SCREW	2
024070-011	TIE, CABLE	6
030099-736	MANUAL	1

Step 1.

Remove air filter & water receptor from unit.



Step 2.

Remove 3 screws under front grill.



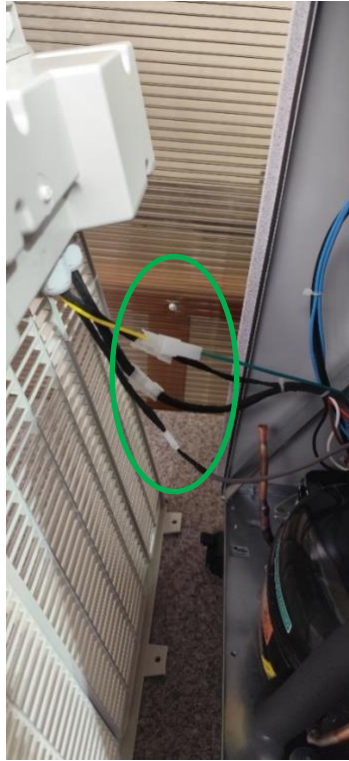
Step 3.

Remove grill - slide it down.



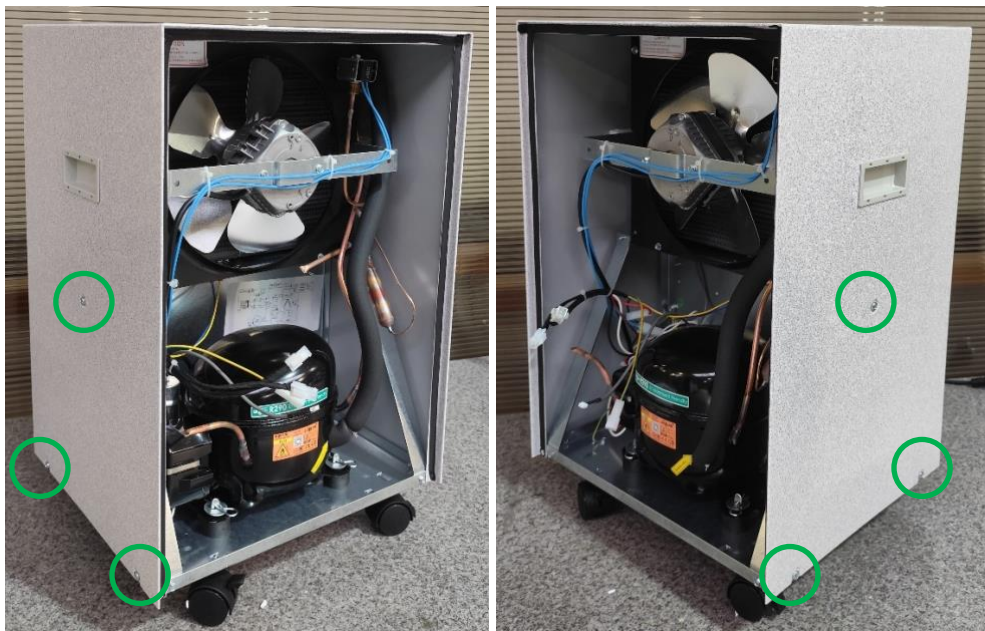
Step 4.

Disconnect all 4 wires connecting grille. **Note:** It's a good idea to take a picture of wires for ease of re-assembly later.



Step 5.

Remove screws on both sides of the device. Then remove wrapper.



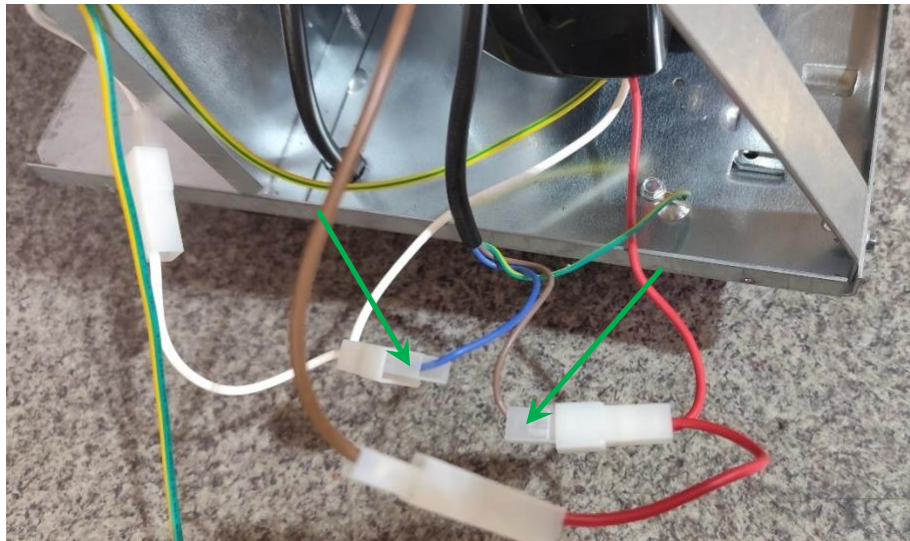
Step 6.

Remove all indicated cable ties .



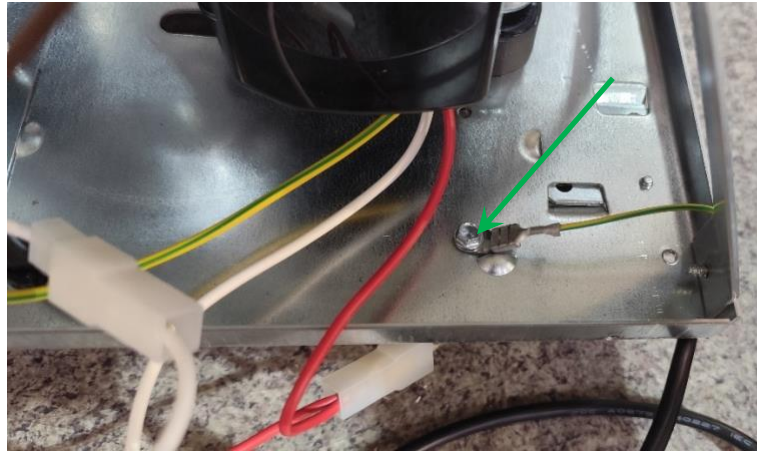
Step 7.

Disconnect indicated fan motor wires. **Note:** It's a good idea to take a picture of wires for ease of re-assembly later.



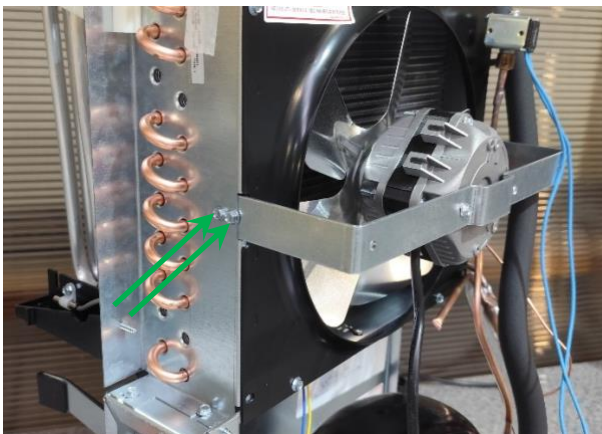
Step 8.

Remove fan motor G/Y (Earth) wire screw from Base.



Step 9.

Remove screws attaching fan motor bracket to condenser frame – two on each side. While removing screws hold fan motor with your hand.



Step 10.

Gently pull bracket with fan motor, and remove it from device. You will **not** need this assembly again.



Step 11.

Screw fan air blade, to fan motor with Screw. (Note: Screw provided with motor)

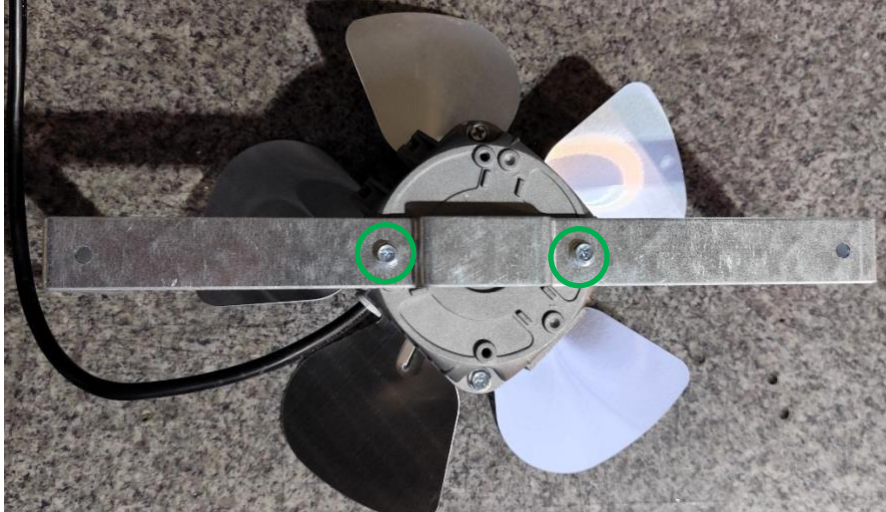


Arrow must indicate anticlockwise direction. This is correct mounting position of Fan Blade!



Step 12.

Screw fan motor to bracket using two screws from kit. Only screws from kit can be used.



Step 13.

Screw bracket with fan assembly to condenser frame. (2 screws each side)



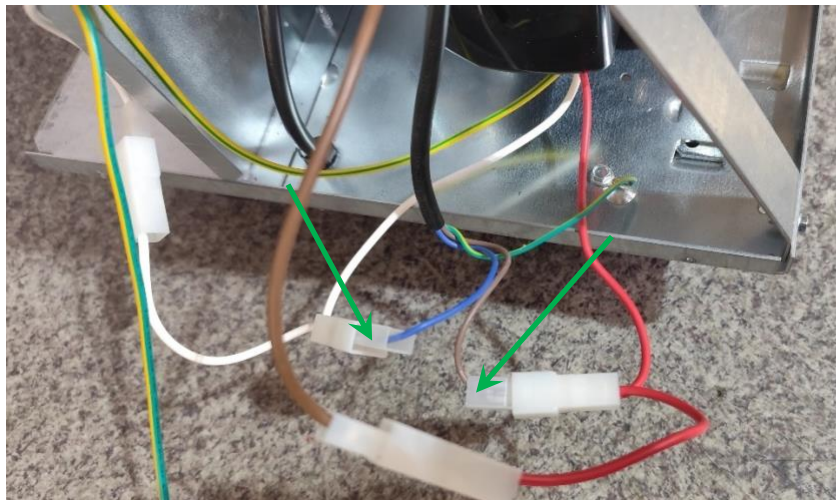
Step 14.

Screw earth connector to base.



Step 15.

Connect brown and blue fan motor wires to wiring harnesses.



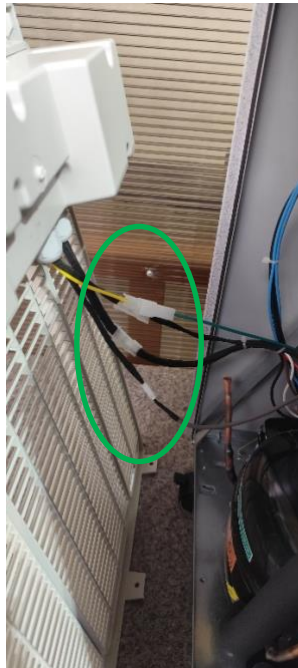
Step 16.

Zip wires with cable ties as shown on picture.



Step 17.

Plug all 4 wires to grille.



Step 18.

Put wrapper on and screw 3 screws on each side – opposite to “Step 5.”

Step 19.

Mount front grill. First slide grill upper clips under wrapper upper edge, then screw 3 screws attaching grill to lower base. Opposite order of “Step 3” and “Step 2”.

Step 20.

Mount air filter and water receptor. Unit is ready to work.

RETROFIT IS NOW COMPLETE