



PLF8MY ■ Manual, Refrigerated
PLF8MHY ■ Manual, Refrigerated, Hot 'n' Cold
PLF14MY ■ Manual, Refrigerated
PLF14MHY ■ Manual, Refrigerated, Hot 'n' Cold
PM ■ Manual, Non-Refrigerated
Drinking Fountain

PLF8MY

Delivering 60LPH of 10°C water at 21°C ambient.
 Cooling system uses R-134a refrigerant.

PLF8MHY

Additionally delivers Hot water.

PLF14MY

Delivering 106LPH of 10°C water at 21°C ambient.
 Cooling system uses R-134a refrigerant.

PLF14MHY

Additionally delivers Hot water.

PM

Delivering ambient drinking water.

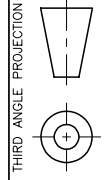
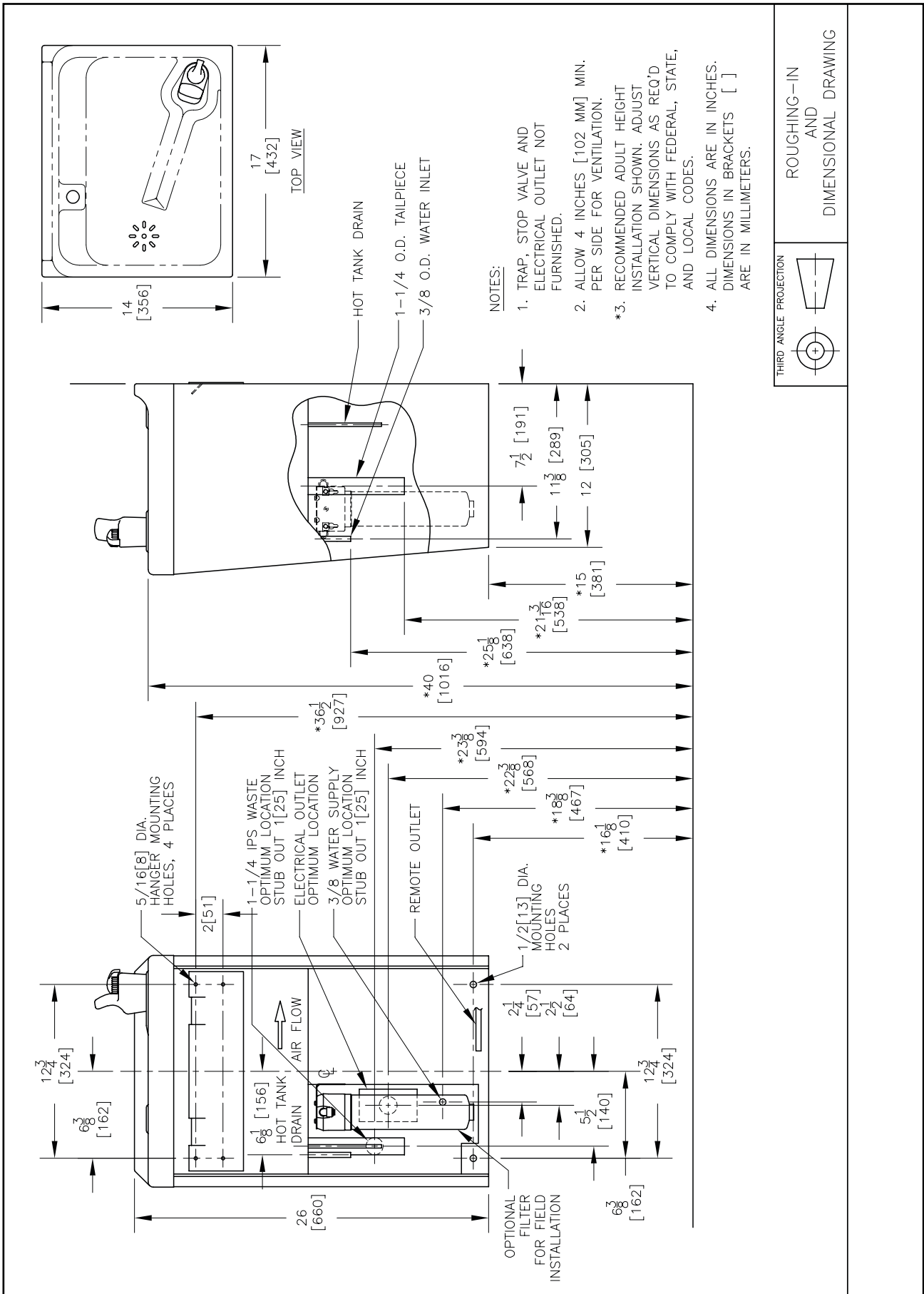


These surface mount drinking fountains are manually activated via the Dial-A-Drink adjustable bubbler.

Complies with ANSI A117.1 and ADA. Shall comply with all relevant CE directives (LVD , EMC, RoHS). Shall comply with ANSI/NSF 61.

Suitable for public building, gymnasiums, sports complexes, hospitals, schools, and offices.

MODEL CODE	PLF8MY	PLF8MHY	PLF14MY	PLF14MHY	PM
ACTIVATION	Mechanical (Dial-A-Drink Adjustable Bubbler with Flexible Bubbler Guard)				
FILTRATION	Green Filter (optional), Built-in 100 micron strainer				
DISINFECTION	Ultra Blu V (optional)				
AUTO-OFF WATER FLOW	No				
DRAINAGE TYPE	Built in drain				
EXTERIOR CHASSIS	Brushed Stainless Steel				
DIMENSIONS	Heavy Duty Galvanised Steel				
NET WEIGHT	33 kg	35 kg	35 kg	36 kg	16 kg
POWER SUPPLY	220-240V, 50/60 Hz				
HOT 'N' COLD™ MODEL	No	Yes	No	Yes	No
COOLING PERFORMANCE	60 LPH Rated Capacity & Base Rate (10°C in 21°C amb. temp.)		106 LPH Rated Capacity & 60 LPH Base Rate (10°C in 21°C amb. temp.)		Non-Refrigerated
FULL LOAD AMPS	2.5A	4.7A	2.5A	4.7A	-
RATED WATTS	320 W	820 W	320 W	820 W	-
ENERGY SYSTEM	Refrigeration is on only when in use or if water temp increases during long period of standby.				-
COUNTRY OF ORIGIN	Mexico				
CERTIFICATIONS	ANSI/NSF 61, CABO/ANSI A117.1, ADA, CE (LVD, EMC, RoHS)				
WARRANTY	1 Year				



ROUGHING-IN AND DIMENSIONAL DRAWING

