



**M8WRY.**  
Contactless, Refrigerated  
Drinking Fountain

**M8WRY is the OASIS Radii™ contactless solution.  
Eliminating the worry of cross-contamination!**

M8WRY delivers 60LPH of 10°C water at 21°C ambient. This modular drinking fountain is manually activated via the antimicrobial touch-button.

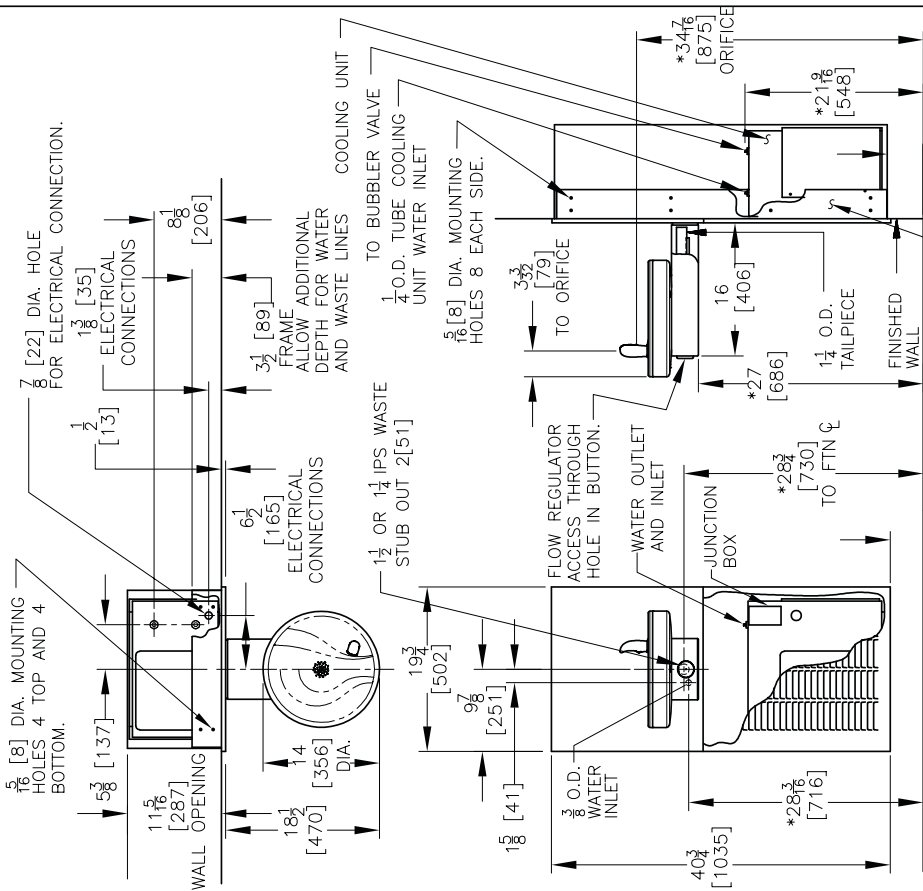
Complies with ANSI A117.1 and ADA. Shall comply with all relevant CE directives (LVD , EMC, RoHS). Shall comply with ANSI/NSF 61.

Suitable for public building, gymnasiums, sports complexes, hospitals, schools, and offices.



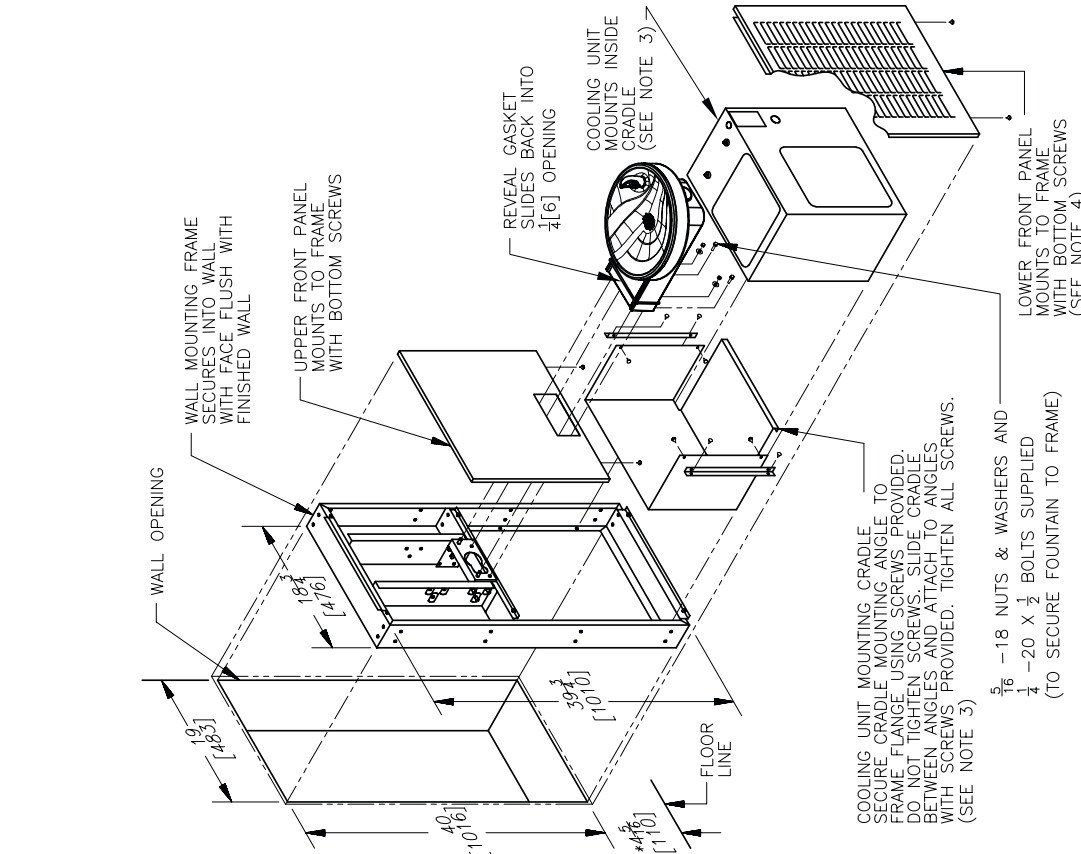
MODEL CODE	M8WRY
ACTIVATION	Mechanical (touch-button)
FILTRATION	Green Filter (optional), Built-in 100 micron strainer
DISINFECTION	Ultra Blu V (optional)
AUTO-OFF WATER FLOW	No
DRAINAGE TYPE	Built in drain, Removable drip tray
EXTERIOR	Antimicrobial ABS Plastic, Antimicrobial copper touch points, Brushed Stainless Steel
CHASSIS	Heavy Duty Galvanised Steel
DIMENSIONS	1035(H) x 502(W) x 483(D) mm (287 recessed)
NET WEIGHT	45 kg
POWER SUPPLY	220-240V, 50/60 Hz
COOLING PERFORMANCE	60 LPH Rated Capacity & Base Rate (10°C in 21°C amb. temp.)
FULL LOAD AMPS	2.2A
RATED WATTS	340 W
ENERGY SYSTEM	Refrigeration is on only when in use or if water temp increases during long period of standby.
COUNTRY OF ORIGIN	Mexico
CERTIFICATIONS	ANSI/NSF 61, CABO/ANSI A117.1, ADA, CE (LVD, EMC, RoHS)
WARRANTY	1 Year

ROUGHING-IN AND DIMENSIONAL DRAWING



- NOTES:
- RECOMMENDED ADULT HEIGHT INSTALLATION SHOWN. ADJUST VERTICAL DIMENSIONS AS REQUIRED TO COMPLY WITH FEDERAL, STATE AND LOCAL CODES.
  - STOP VALVE, TRAP, PIPE CONNECTOR TO WASTE LINE AND SUPPLY LINE NOT PROVIDED.
  - M8WR ONLY. M8WR SHOWN.
  - PLAIN (NO LOUVERS) - MMR ONLY.
  - ALL DIMENSIONS ARE IN INCHES. DIMENSIONS IN BRACKETS [ ] ARE IN MILLIMETERS.

WALL OPENING & ASSEMBLY



- COOLING UNIT MOUNTING CRADLE TO SECURE CRADLE MOUNTING ANGLE TO FRAME FLANGE USING SCREWS PROVIDED. DO NOT TIGHTEN SCREWS. SLIDE CRADLE BETWEEN ANGLES AND ATTACH TO ANGLES WITH SCREWS PROVIDED. TIGHTEN ALL SCREWS. (SEE NOTE 3)
- 5/16" - 18 NUTS & WASHERS AND 1/4" - 20 X 1/2" BOLTS SUPPLIED (TO SECURE FOUNTAIN TO FRAME)
- THIRD ANGLE PROJECTION
- ROUGHING-IN AND DIMENSIONAL DRAWING