



**M12WREBFY** ■ Contactless + Manual, Refrigerated  
**M8WREBFY** ■ Contactless + Manual, Refrigerated  
 Hydration Station Combo

**M12WREBFY**

Delivering 90LPH of 10°C water at 21°C ambient.  
 Cooling system uses R-134a refrigerant.

**M8WREBFY**

Delivering 60LPH of 10°C water at 21°C ambient.  
 Cooling system uses R-134a refrigerant.



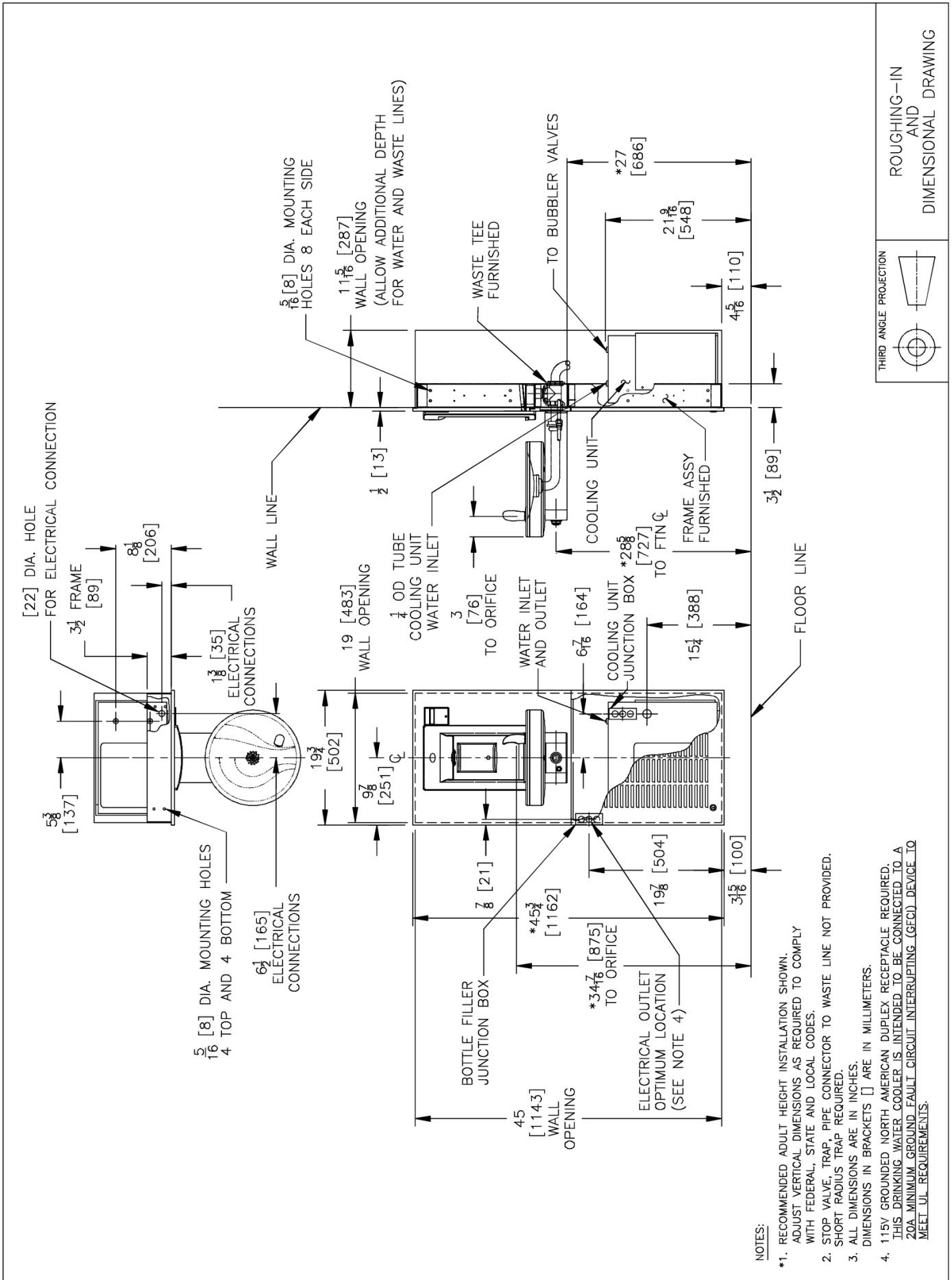
These surface mount hydration station combos have two activation methods. The bottle filler includes an electronic sensor for a contactless (touch free) activation and a 30 second shut off timer. The radii drinking fountain is activated via the push-buttons.

The Bottle Counter conveniently displays the number of times the unit has been used, encouraging the refill of sports bottles.

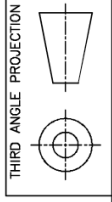
Key moulded components shall contain Freshield, which utilises a silver-based antimicrobial compound that reduces the growth of micro-organisms and mildew to protect the surfaces from discolouration, odours and degradation.

Suitable for public building, gymnasiums, sports complexes, hospitals, schools, and offices.

MODEL CODE	M12WREBFY	M8WREBFY
ACTIVATION	Bottle Filler: Contactless (Infrared sensor) Drinking Fountain: Manual (Push-button)	
SENSOR COVERAGE	Up to 5cm (approx.)	
FILTRATION	Green Filter (optional), Built-in 100 micron strainer	
AUTO-OFF WATER FLOW	Bottle Filler: Yes ; Drinking Fountain: No	
DRAINAGE TYPE	Built in drain, Removable drip tray	
EXTERIOR CHASSIS	Antimicrobial ABS Plastic, Brushed Stainless Steel Heavy Duty Galvanised Steel	
DIMENSIONS	1143(H) x 502(W) x 483(D) (287 recessed)	
ALCOVE HEIGHT	265 mm	
NET WEIGHT	64 kg	
POWER SUPPLY	220-240V, 50/60 Hz	
COOLING PERFORMANCE	90 LPH Rated Capacity & Base Rate (10°C in 21°C amb. temp.)	60 LPH Rated Capacity & Base Rate (10°C in 21°C amb. temp.)
FULL LOAD AMPS	3.7A	2.2A
RATED WATTS	627 W	347 W
ENERGY SYSTEM	Refrigeration is on only when in use or if water temp increases during long period of standby.	
COUNTRY OF ORIGIN	Mexico	
CERTIFICATIONS	ANSI/NSF 61, CABO/ANSI A117.1, ADA, CE (LVD, EMC, RoHS), WRAS	
WARRANTY	1 Year	



- NOTES:
- \*1. RECOMMENDED ADULT HEIGHT INSTALLATION SHOWN. ADJUST VERTICAL DIMENSIONS AS REQUIRED TO COMPLY WITH FEDERAL, STATE AND LOCAL CODES.
  - STOP VALVE, TRAP, PIPE CONNECTOR TO WASTE LINE NOT PROVIDED.
  - SHORT RADIUS WATER COOLER IS REQUIRED.
  - ALL DIMENSIONS ARE IN INCHES. DIMENSIONS IN BRACKETS [ ] ARE IN MILLIMETERS.
  - 115V GROUNDING NORTH AMERICAN DUPLEX RECEPTACLE REQUIRED. THIS DRINKING WATER COOLER IS INTENDED TO BE CONNECTED TO A 20A MINIMUM GROUND FAULT INTERRUPTING (GFCI) DEVICE TO MEET UL REQUIREMENTS.



ROUGHING-IN AND DIMENSIONAL DRAWING



www.oasis.ie  
www.oasisbottlefillers.com  
info@oasis.ie

OASIS IRELAND  
Bunree Industrial Estate, Ballina,  
Co. Mayo, F26 D5R3, Ireland.  
+353 96 71222

OASIS POLAND  
ul. Gutenberga 20,  
44-164, Gliwice, Poland  
+48 32 332 65 01