



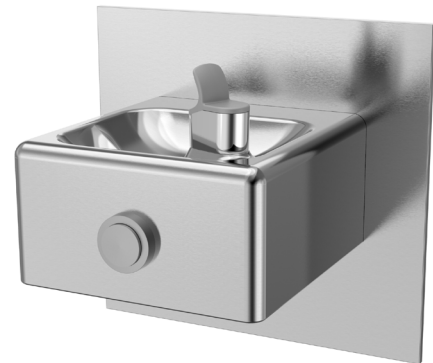
**M110PM**  
Manual, Non-Refrigerated  
Drinking Fountain

**M110PM is a modular compact drinking fountain, ideal for those smaller spaces.**

M110PM delivers ambient drinking water. This modular drinking fountain is manually activated via the antimicrobial touch-button.

Complies with ANSI A117.1 and ADA. Shall comply with all relevant CE directives (LVD , EMC, RoHS). Shall comply with ANSI/NSF 61.

Suitable for public building, gymnasiums, sports complexes, hospitals, schools, and offices.



MODEL CODE	M110PM
ACTIVATION	Mechanical (touch-button)
FILTRATION	Green Filter (optional), Built-in 100 micron strainer
DISINFECTION	Ultra Blu V (optional)
AUTO-OFF WATER FLOW	No
DRAINAGE TYPE	Built in drain, Removable drip tray
EXTERIOR CHASSIS	Antimicrobial copper touch points, Brushed Stainless Steel
DIMENSIONS	Heavy Duty Galvanised Steel
NET WEIGHT	464(H) x 502(W) x 352(D) mm (90 recessed)
POWER SUPPLY	9 kg
COOLING PERFORMANCE	-
FULL LOAD AMPS	Non-Refrigerated
RATED WATTS	-
ENERGY SYSTEM	-
COUNTRY OF ORIGIN	Mexico
CERTIFICATIONS	ANSI/NSF 61, CABO/ANSI A117.1, ADA, CE (LVD, EMC, RoHS)
WARRANTY	1 Year

