



FLF300R
Manual, Non-Refrigerated
Drinking Fountain

FLF300R is a countertop drinking fountain.

FLF300R delivers ambient drinking water. This drinking fountain is manually activated via the bubbler.

Complies with ANSI A117.1 and ADA. Shall comply with all relevant CE directives (LVD , EMC, RoHS). Shall comply with ANSI/NSF 61.

Suitable for public building, gymnasiums, sports complexes, hospitals, schools, and offices.



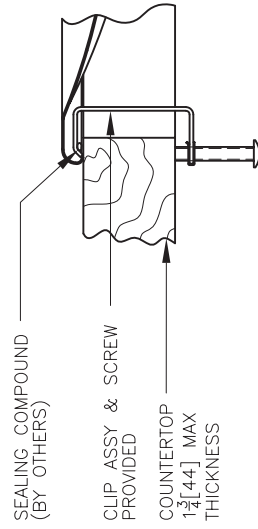
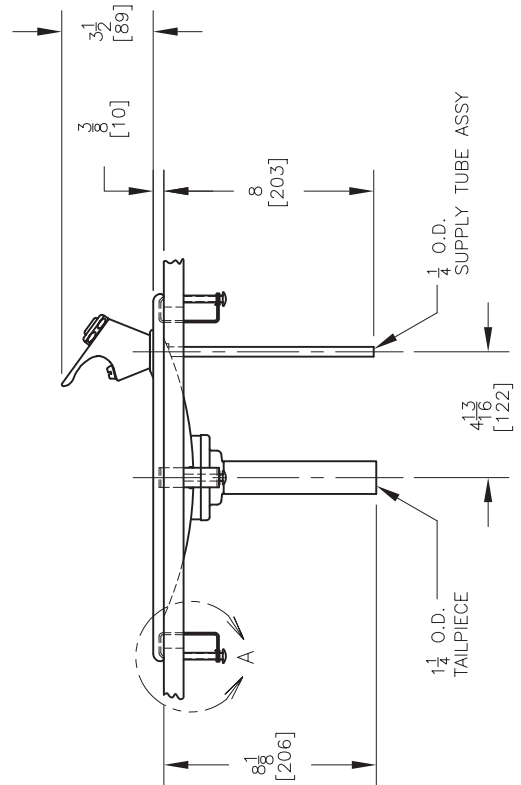
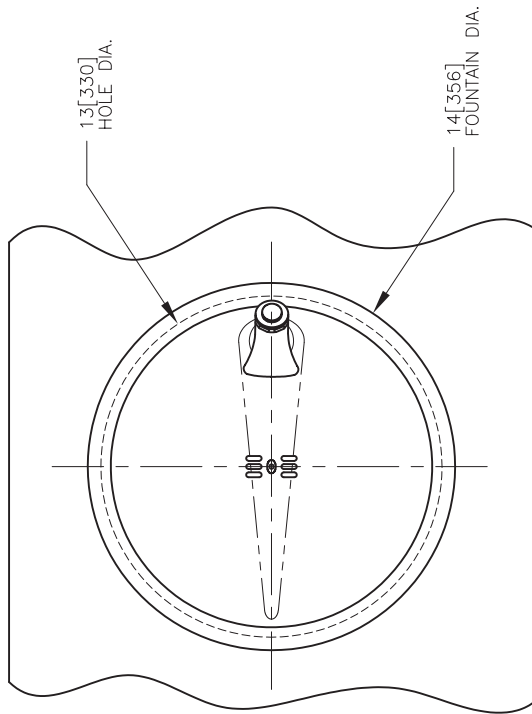
MODEL CODE	FLF300R
ACTIVATION	Mechanical (bubbler with push button)
FILTRATION	Green Filter (optional), Built-in 100 micron strainer
DISINFECTION	Ultra Blu V (optional)
AUTO-OFF WATER FLOW	No
DRAINAGE TYPE	Built in drain, Removable drip tray
EXTERIOR	Brushed Stainless Steel
CHASSIS	Heavy Duty Galvanised Steel
DIMENSIONS	305(H) x 356(W) x 354(D) mm
NET WEIGHT	3 kg
POWER SUPPLY	-
COOLING PERFORMANCE	Non-Refrigerated
FULL LOAD AMPS	-
RATED WATTS	-
ENERGY SYSTEM	-
COUNTRY OF ORIGIN	Mexico
CERTIFICATIONS	ANSI/NSF 61, CABO/ANSI A117.1, ADA, CE(LVD, EMC, RoHS)
WARRANTY	1 Year

MOUNTING DRINKING FOUNTAIN TO COUNTERTOP

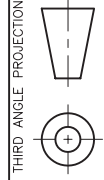
1. CUT A 13[330] DIA. HOLE IN THE COUNTERTOP IN THE DESIRED LOCATION.
2. LAY A BEAD OF SEALING COMPOUND $\frac{1}{8}$ [3] WIDE BY $\frac{1}{8}$ [3] THICK AROUND THE BOTTOM LIP OF THE FOUNTAIN.
3. POSITION THE FOUNTAIN IN THE COUNTERTOP HOLE.
4. SCREW IN SEVERAL THREADS OF THE (4)FOUR SCREWS PROVIDED INTO THE CLIP ASSEMBLIES. ENGAGE THE CLIP ASSEMBLIES IN THE RETURN FLANGE OF THE FOUNTAIN (DETAIL 'A') AND TIGHTEN THE SCREWS TO SECURE THE FOUNTAIN TO THE TOP. NOTE, EQUALLY SPACE THE (4)FOUR CLIP ASSEMBLIES AROUND THE FOUNTAIN.
5. WIPE AWAY ANY EXCESS SEALING COMPOUND AROUND THE FOUNTAIN.
6. CONNECT PLUMBING. CHECK FOR LEAKS.

NOTES:

1. ALL DIMENSIONS ARE IN INCHES. DIMENSIONS IN BRACKETS [] ARE IN MILLIMETERS.
2. TRAP AND STOP VALVE NOT FURNISHED.
3. NOTE: THE FOLLOWING STATES REQUIRE A LICENSED PLUMBER TO INSTALL FOUNTAIN: AR, GA, MA, MI, OK, RI, SC, SD, TX, VT, AND WI. CA, KS, MN, NM, AND OR ALLOW FOR A STATE-REGISTERED INSTALLER OR CONTRACTOR AS WELL. STATE AND LOCAL PLUMBING CODES MAY PROHIBIT THE USE OF SADDLE TAPPING VALVES FOR WATER LINE CONNECTION IN SOME APPLICATIONS. ALL CONNECTIONS MUST CONFORM TO APPLICABLE PLUMBING CODES.



DETAIL A



THIRD ANGLE PROJECTION

ROUGHING-IN AND DIMENSIONAL DRAWING